

MOODS OF THE METROPOLIS

URBANE II

~COLLECTION~



Hands®

fine handmade carpets since 1881



Hands®

Hands is proudly announcing the volume 2 of the "Urbane Collection", a collection of modern and abstract carpets.

URBANISM, a way of life

It is the characteristic way of interaction of inhabitants of towns and cities with the built environment. It signifies the dissemination of urban culture and the evolution of metropolitan society. Urbanism indicates a wide acquaintance with things and people, open mindedness with change and individualism. It denotes modernization, mobility and abstraction and the decline of traditional patterned things.

Cited architecture and urbanism has been the inspiration behind this collection. Urbanism has become synonymous with the world of architecture and geometric designs. The collection explores the influence of contemporary designs in the modern urban society of today. The designs trace elements of the physical structures that inspired them. It has the same tenets of scale, shape and forms that architects apply in the buildings. These carpets bring complex urban sensibilities into the traditional design landscapes.

Carpets that accentuate the urban living, innovative designs with an emphasis on structures, shapes and forms of buildings.

OPEN-MINDEDNESS



HELIX

The carpet illustrates structures, which are not only architecturally significant but also highlights the acceptability of the bold colors and modern designs by the urban society.

**B
L
U
E**

Hand Knotted

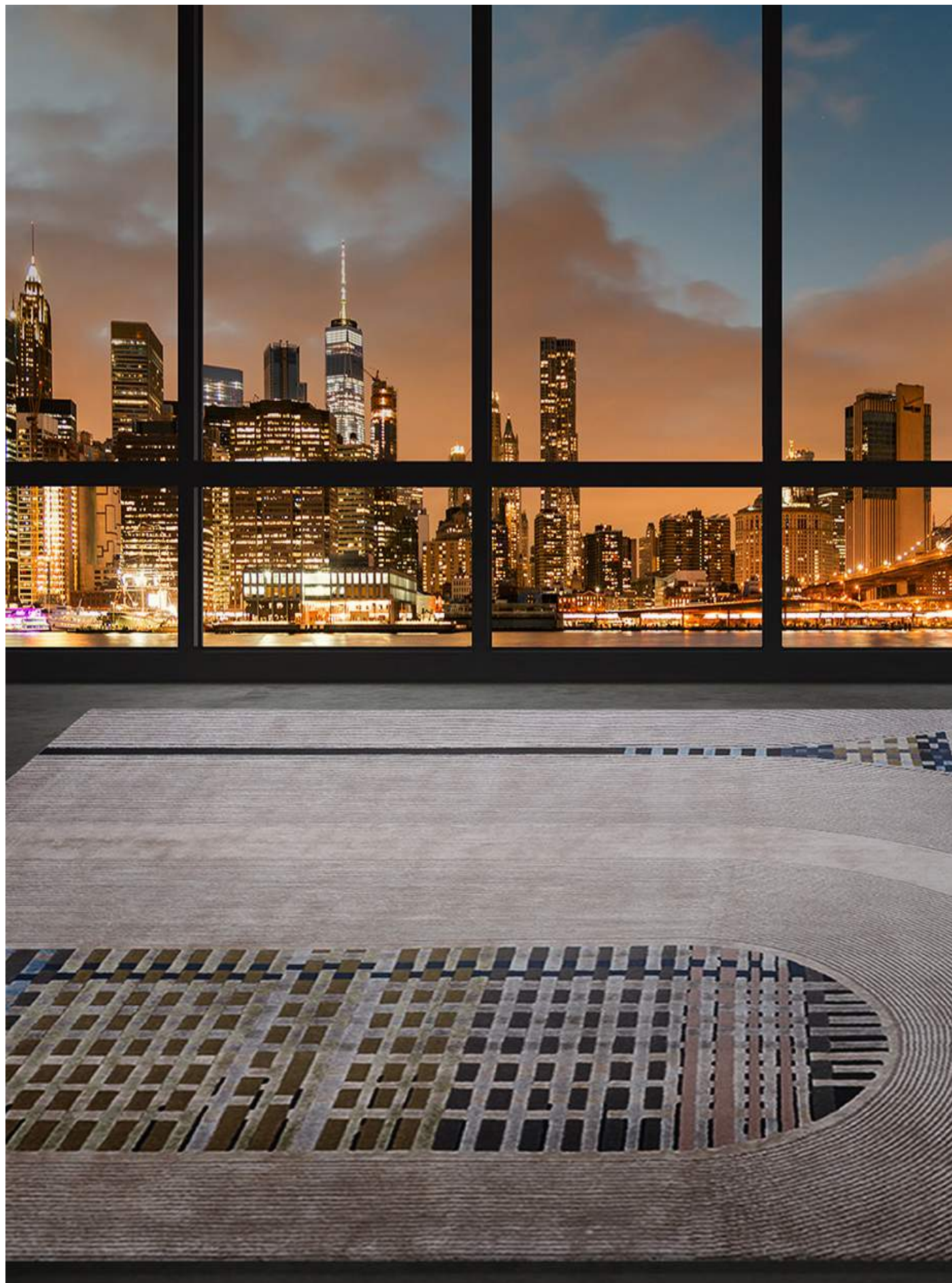


Hand Knotted



**R
U
S
T**

ARCHITECTURE



TRESTLE

The signature design of arches in the buildings has been the inspiration for many artworks and creations. The carpet design imitates this unmatched architectural wonder, The Empire State building which has set new parameters for urbanization.

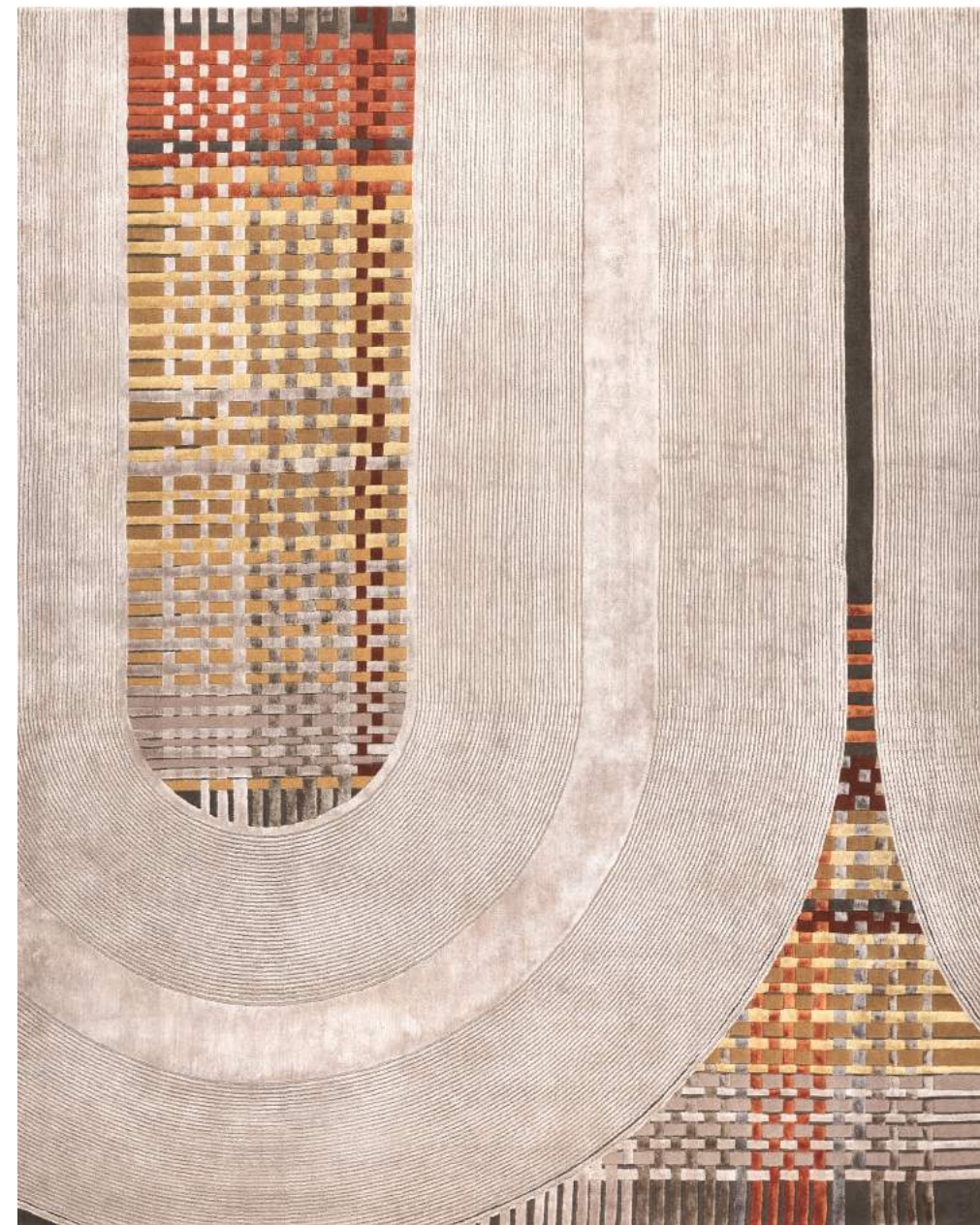
B
L
U
E

D
I
G
O

Hand Knotted



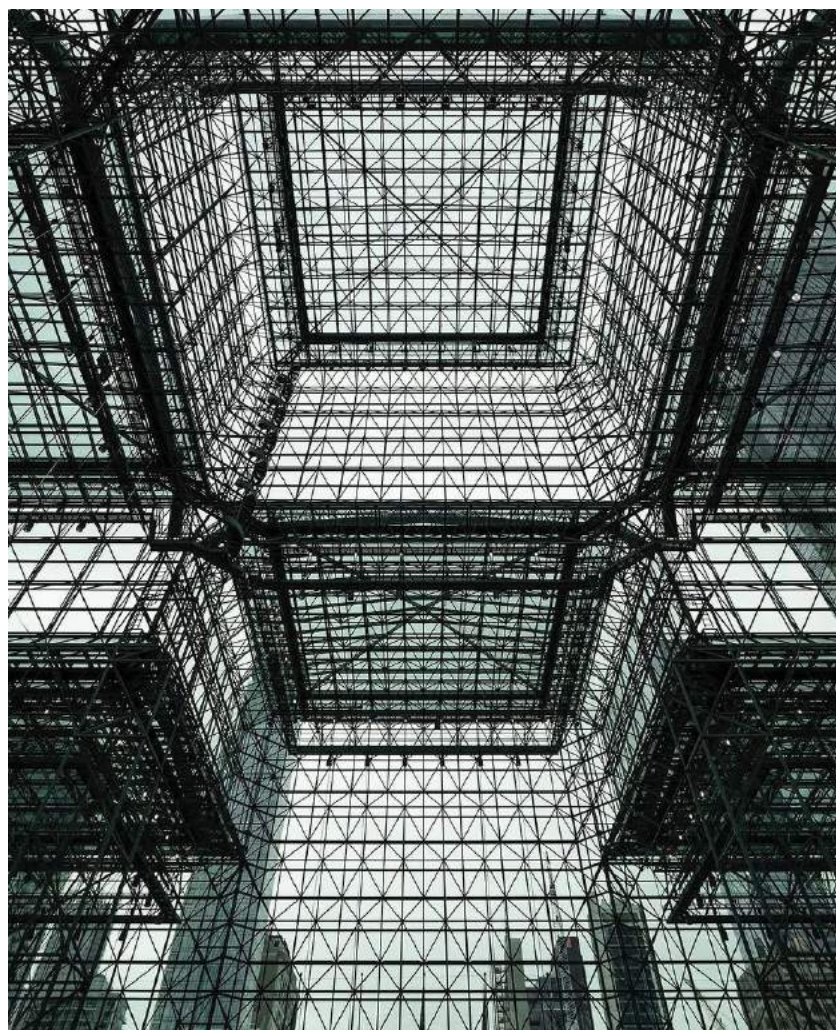
Hand Knotted



R
U
S
T



**C
O
M
P
L
E
X
I
T
I
E
S**



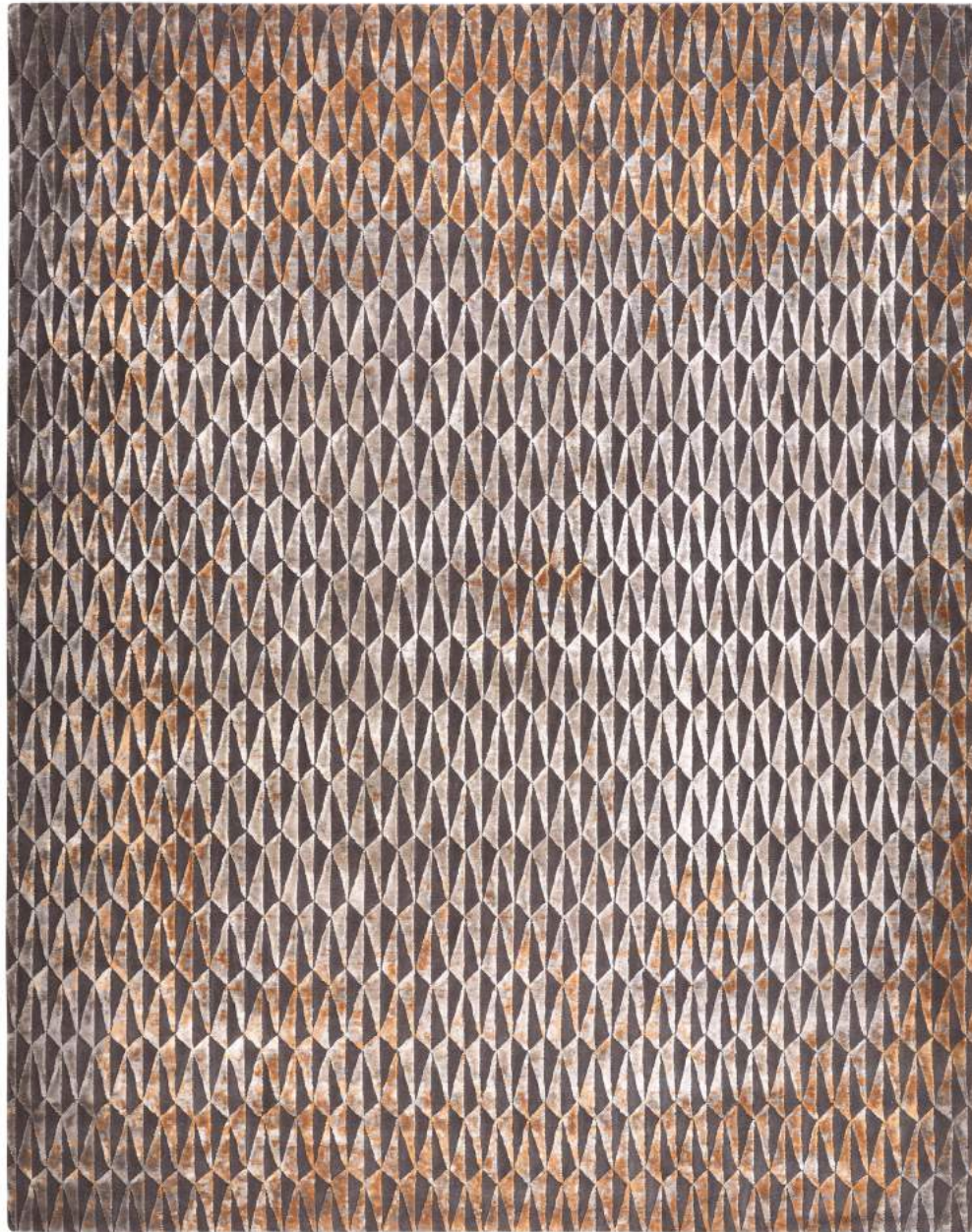
TRIUNE

Javits Centre in New York is an assemblage of rectilinear forms and the primary venue for trade shows. The physical aspect of this building could be traced to the complex history of families and businesses as a result of urbanization. The carpet is staging the same complexities of urbanism.

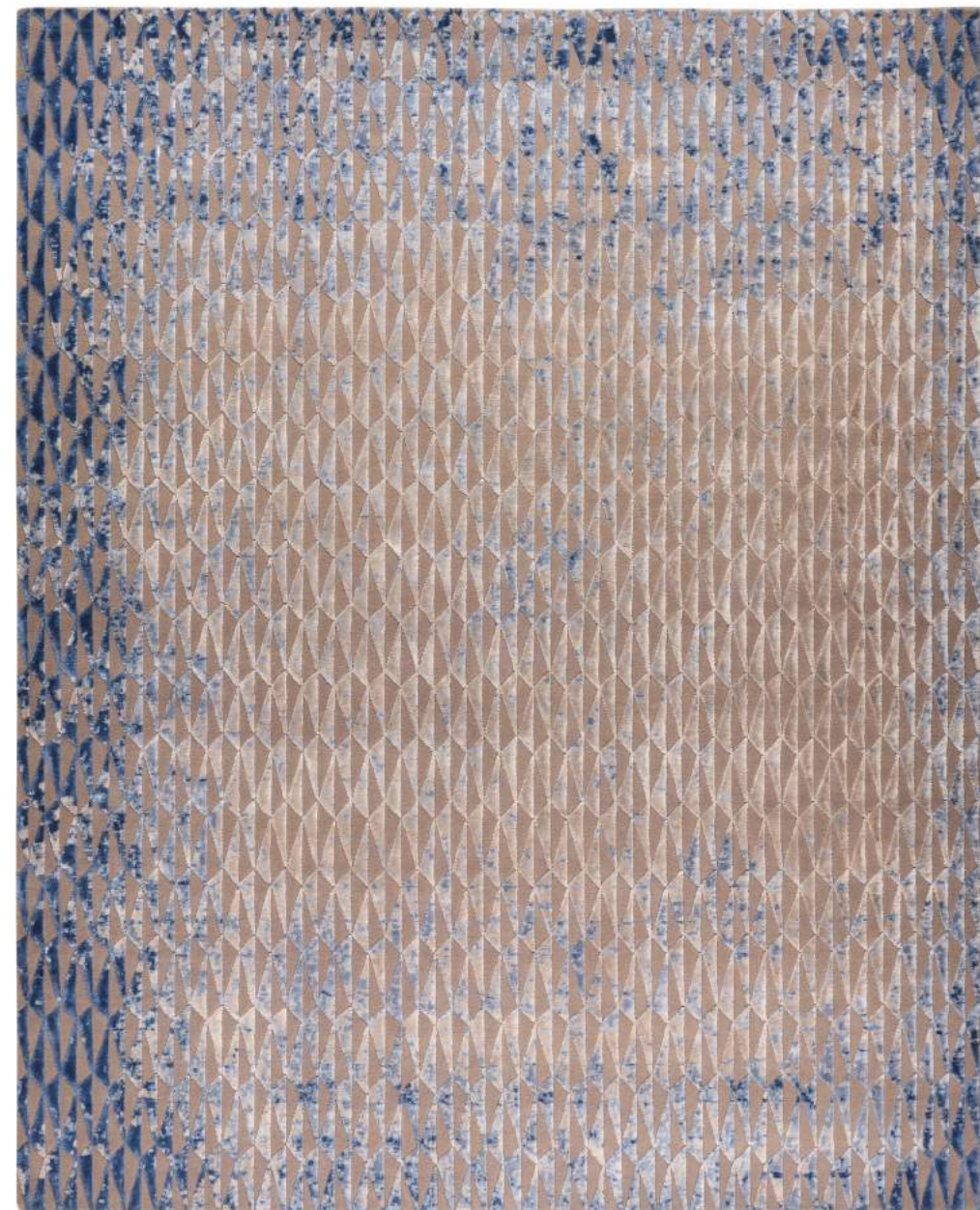
T
A
U
P
E

R
U
S
T

Hand Knotted



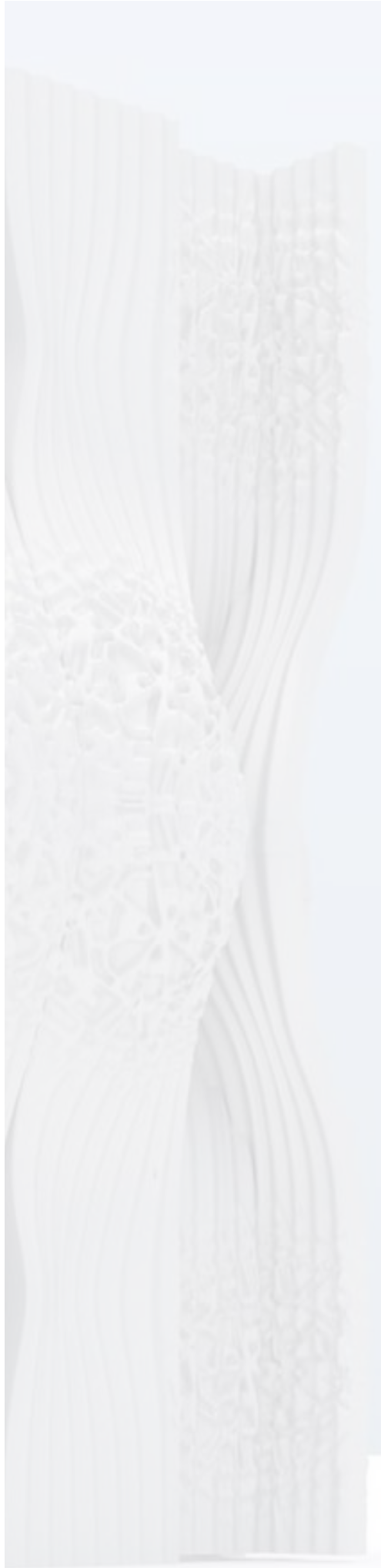
Hand Knotted



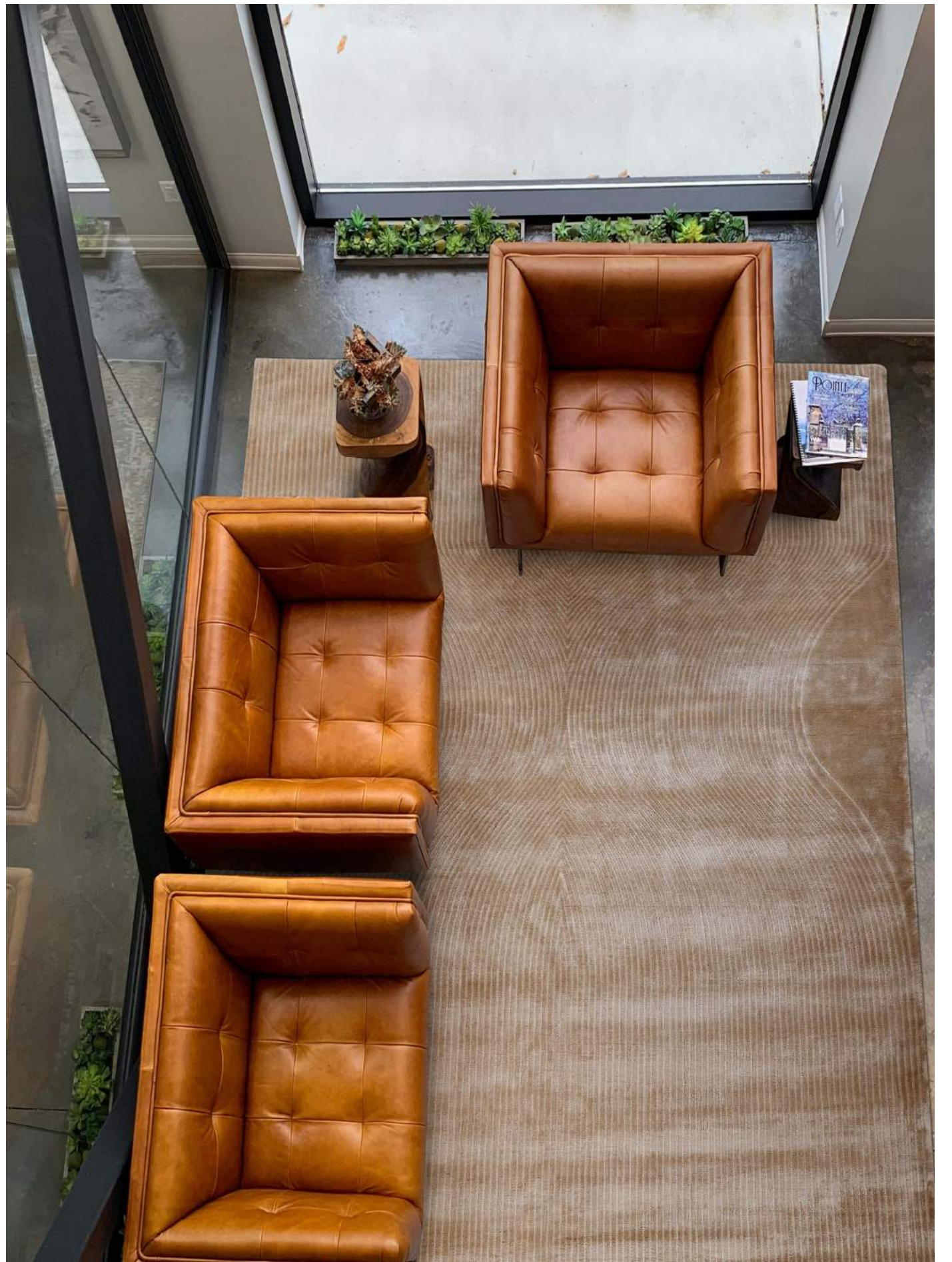
S
I
L
V
E
R

B
L
U
E





**E
S
S
E
N
T
I
A
L
I
S
M**



INDAH

The carpet would fall under the genre of urban minimalism. Organic and discreet formation of lines and curves emphasising the minimalistic architecture where less is more. The carpet embodies “essentialism; the disciplined pursuit of less.”

**G
R
E
Y**

Hand Knotted



Hand Knotted



**I
V
O
R
Y**





**H
I
S
T
O
R
I
C
A
L**

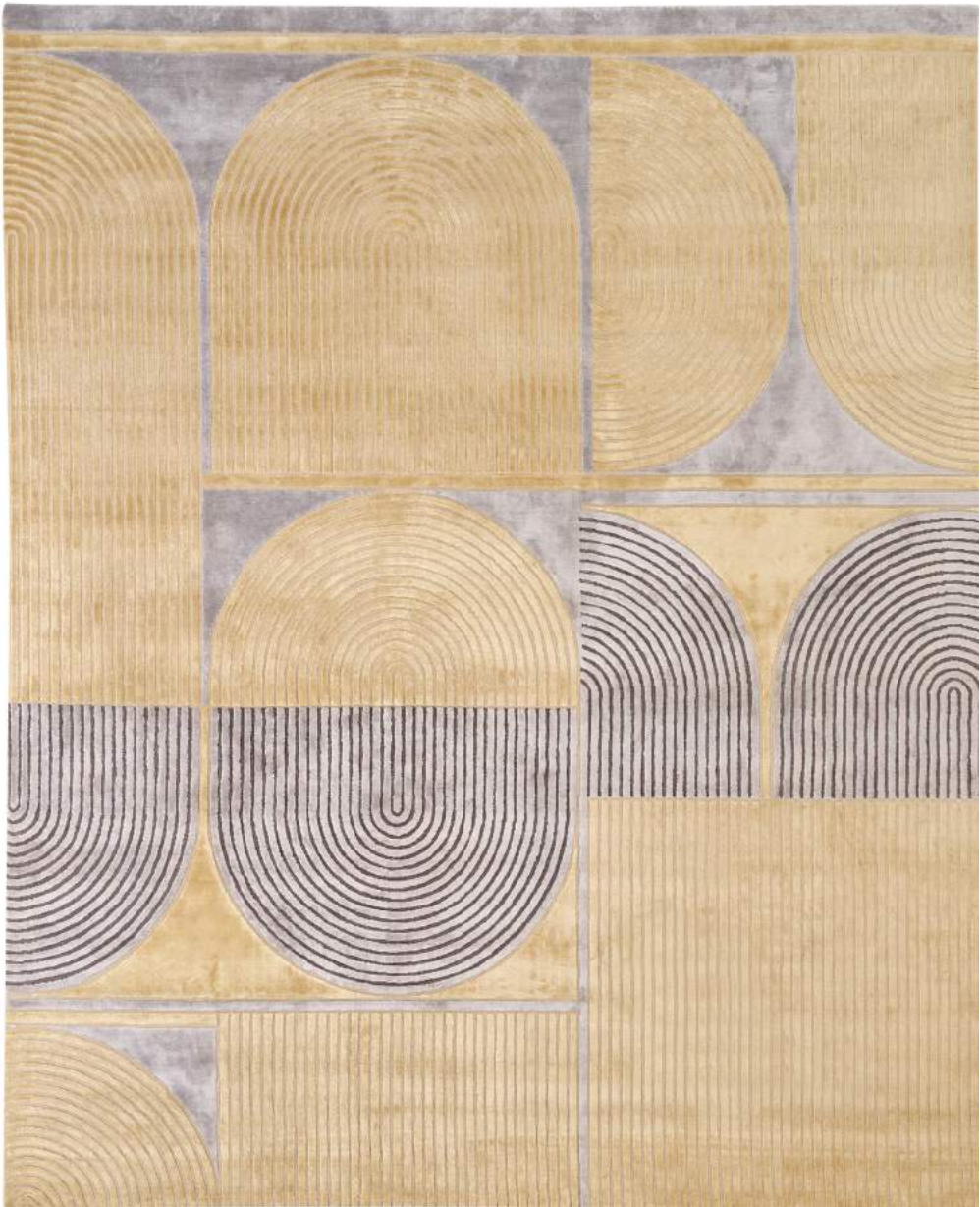


IRINA

The carpet is the balance of tradition, heritage and modernity, inspired by the Ouse Valley Viaduct. This Viaduct known for its ornate design and the formation of semi-circles is flaunting a more historic side of the urban architecture.

G
O
L
D

Hand Knotted



Hand Knotted

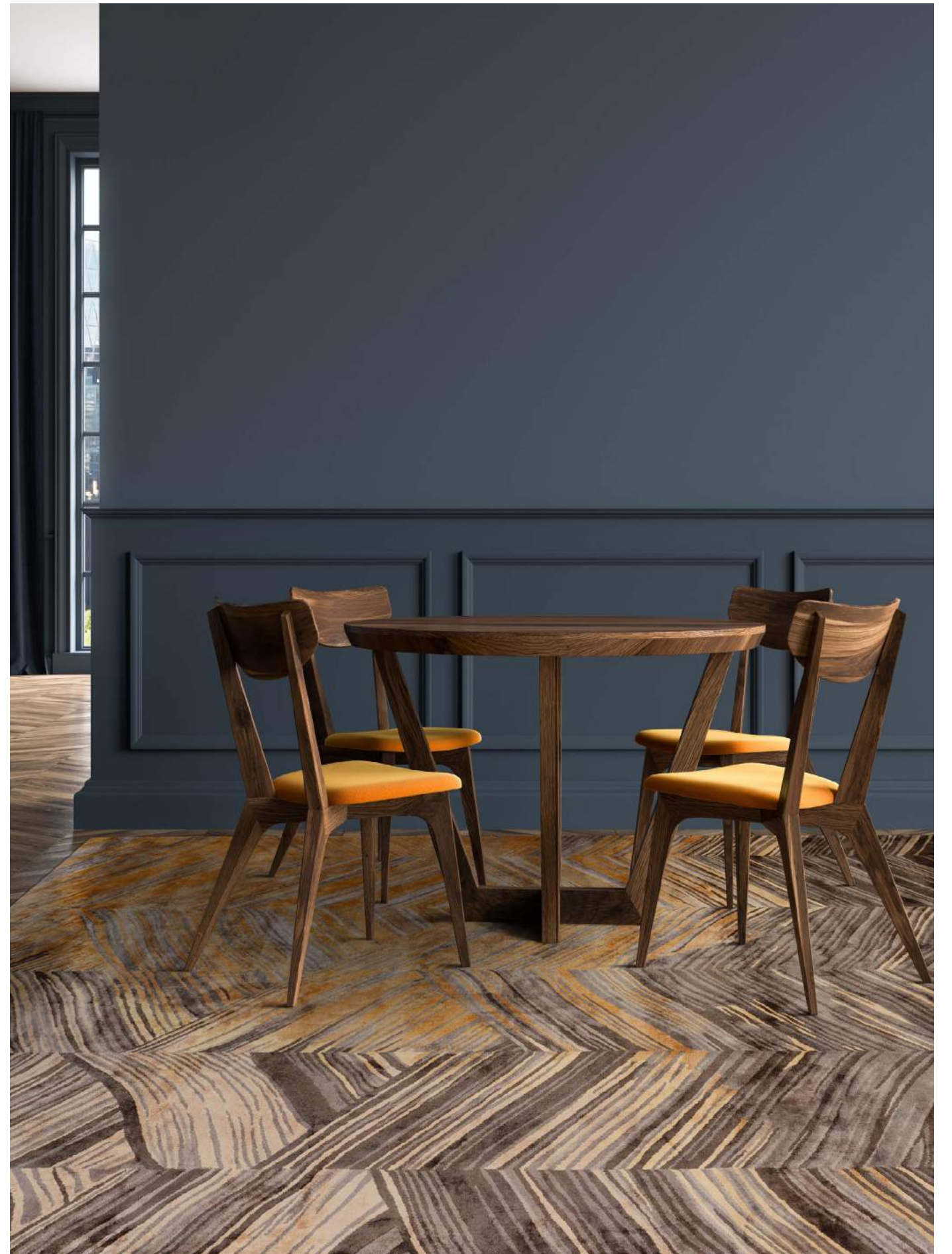
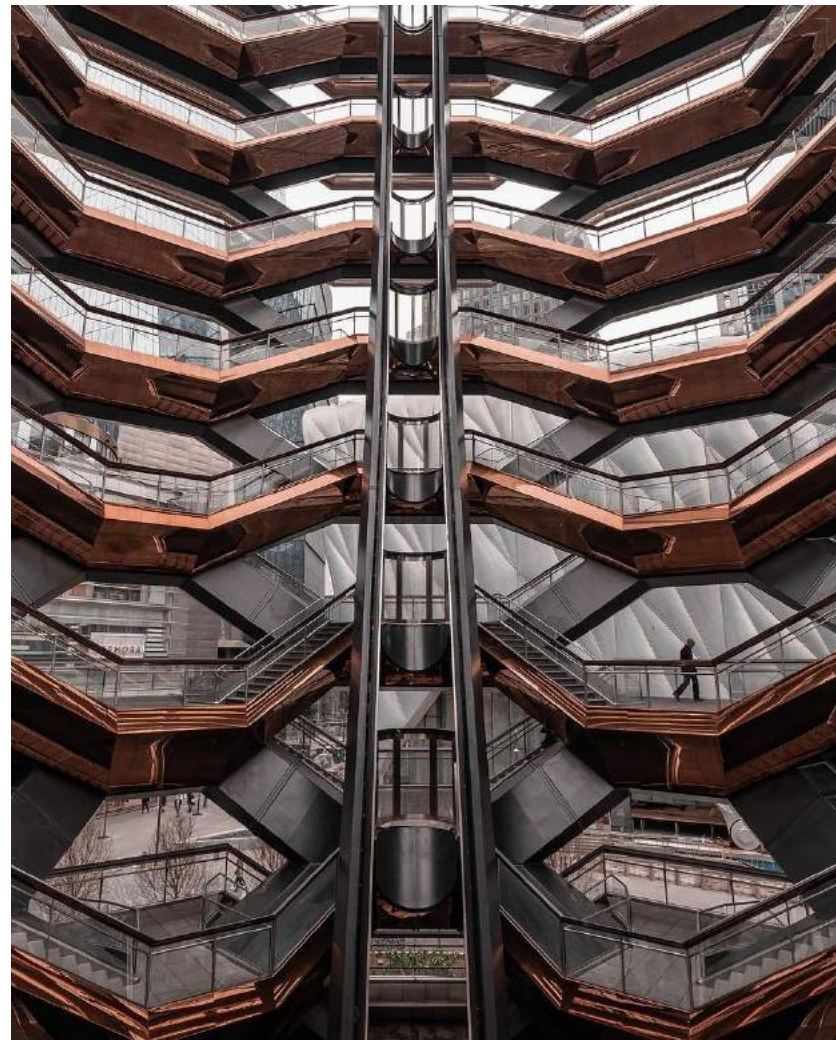


O
L
D
R
O
S
E





**S
Y
M
M
E
T
R
Y**



LEUCOS

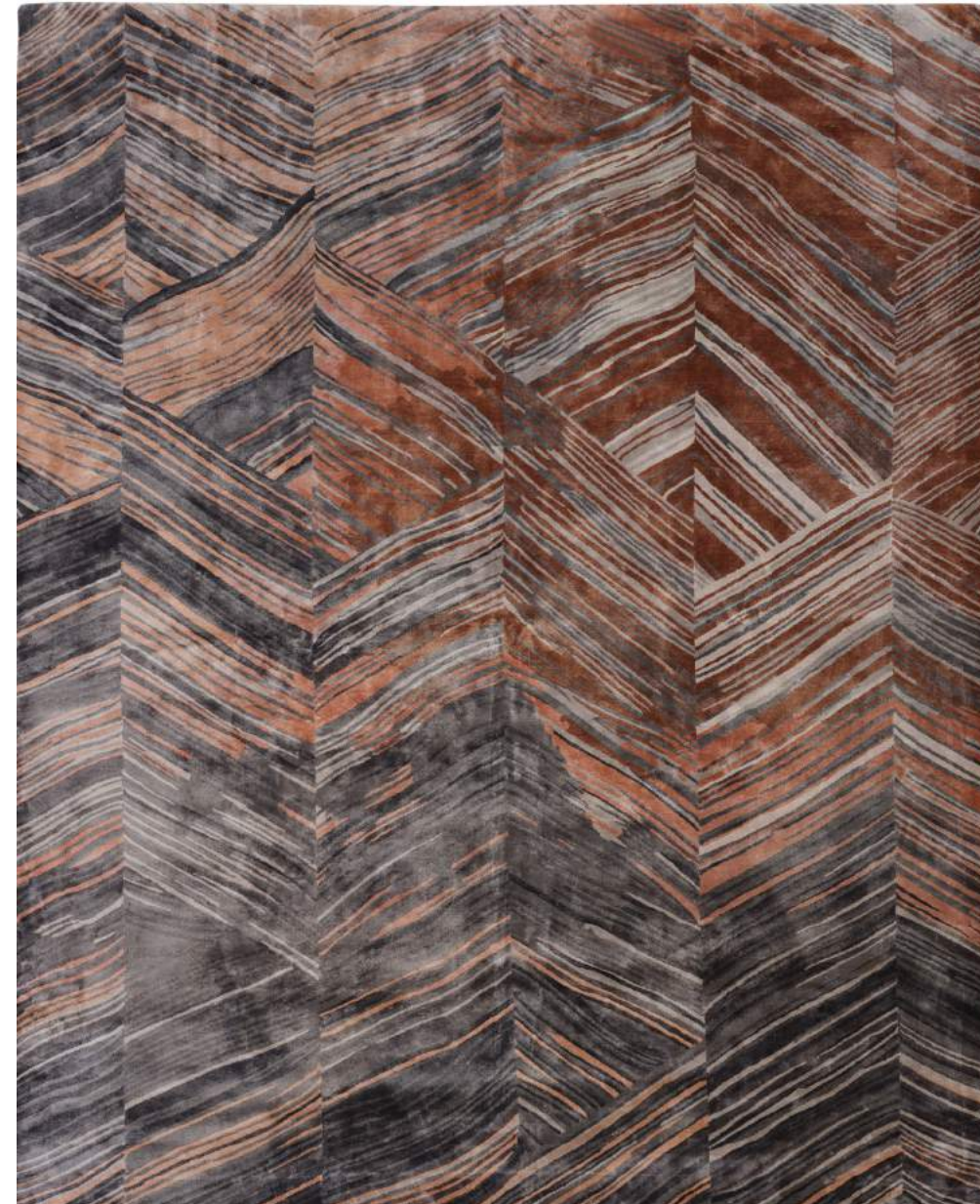
The Vessel, a uniquely symmetrical structure is a place where people come together in the scattered times of urbanization. The carpet reflects the same geometrical symmetry as this architectural framework and the design is similar to that of a bridge connecting people.

G
O
L
D

Hand Knotted



Hand Knotted



O
L
D
R
O
S
E



**M
O
D
E
R
N
I
Z
A
T
I
O
N**



MISCELLA

Foro Boca, the future home of the Boca del Rio Philharmonic Orchestra, is a new and innovative cultural venue that aims to function as an urban detonator that enhances the modernization of Boca del Rio, Veracruz. The same structural modern concept has been amplified in the carpet.

N
A
T
U
R
A
L

Hand Knotted

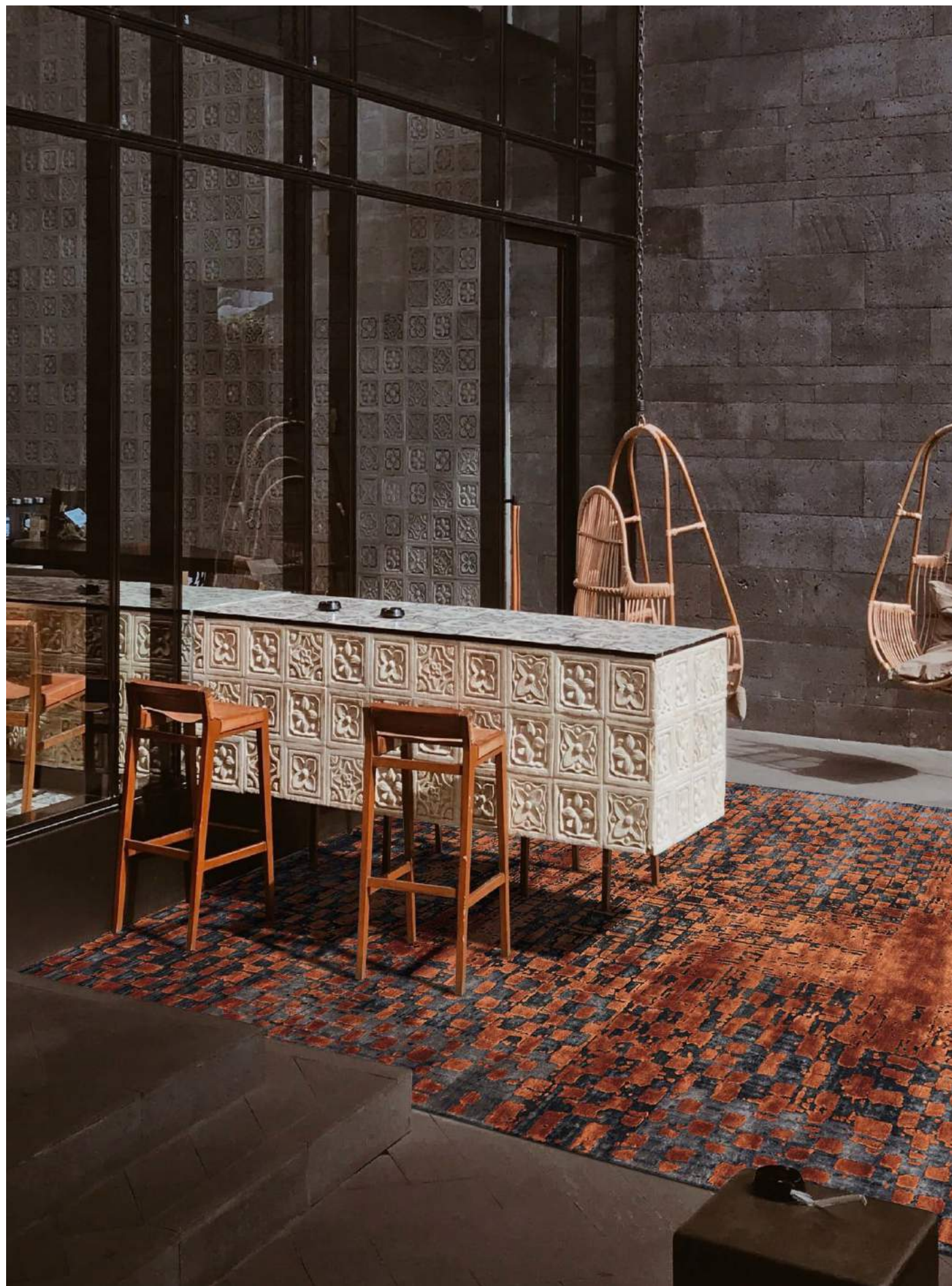


Hand Knotted



A
S
H

UNCERTAINTY

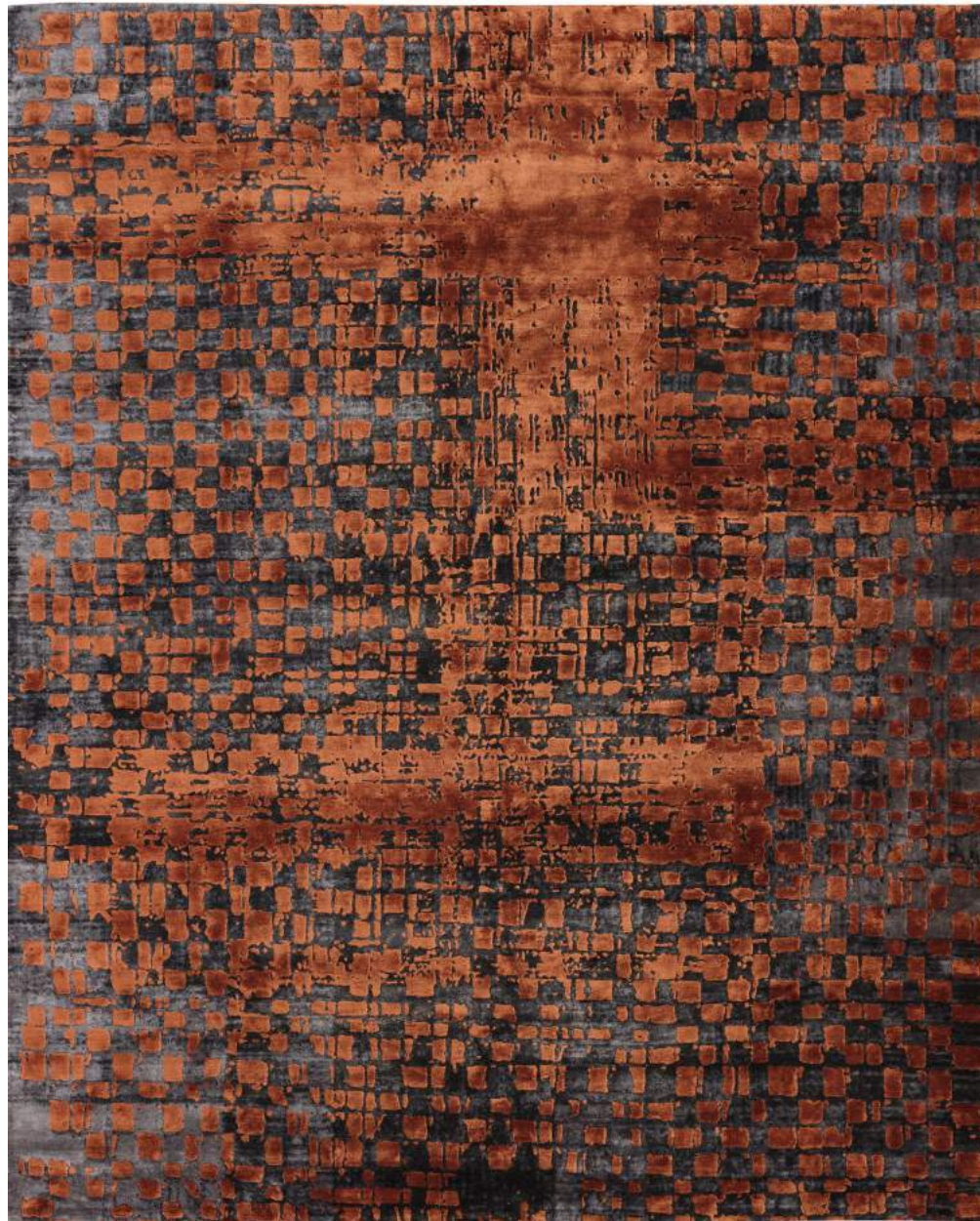


RADIEUX

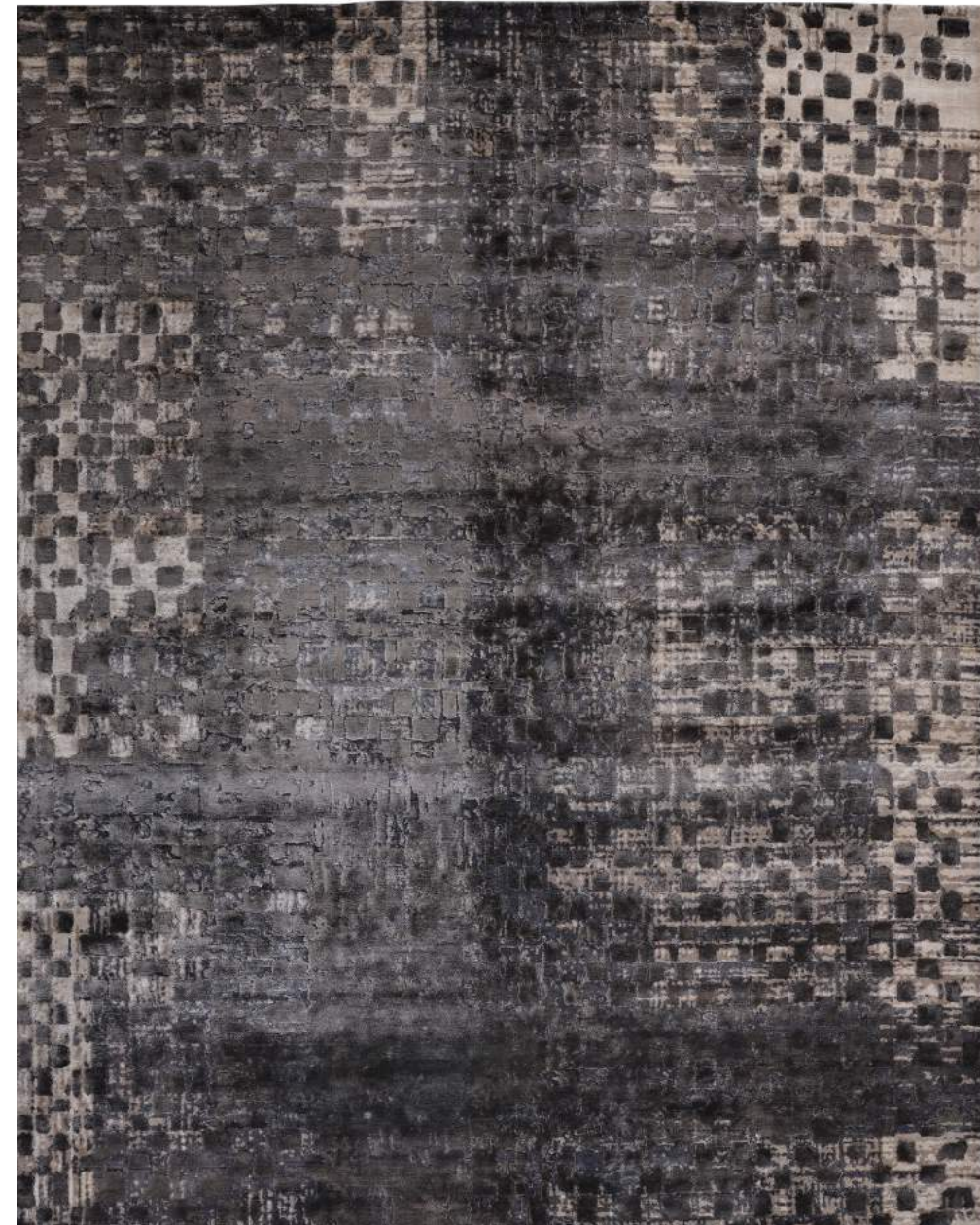
To sustain in the fast pacing environment of today can be a little hazy and challenging at times. The carpet demonstrates the grasp of shape in space, blurring the line between abstract art and geometry. The urban circus in the image shows insecurity and uncertainty which is also replicated in the carpet.

R
U
S
T

Hand Knotted



Hand Knotted

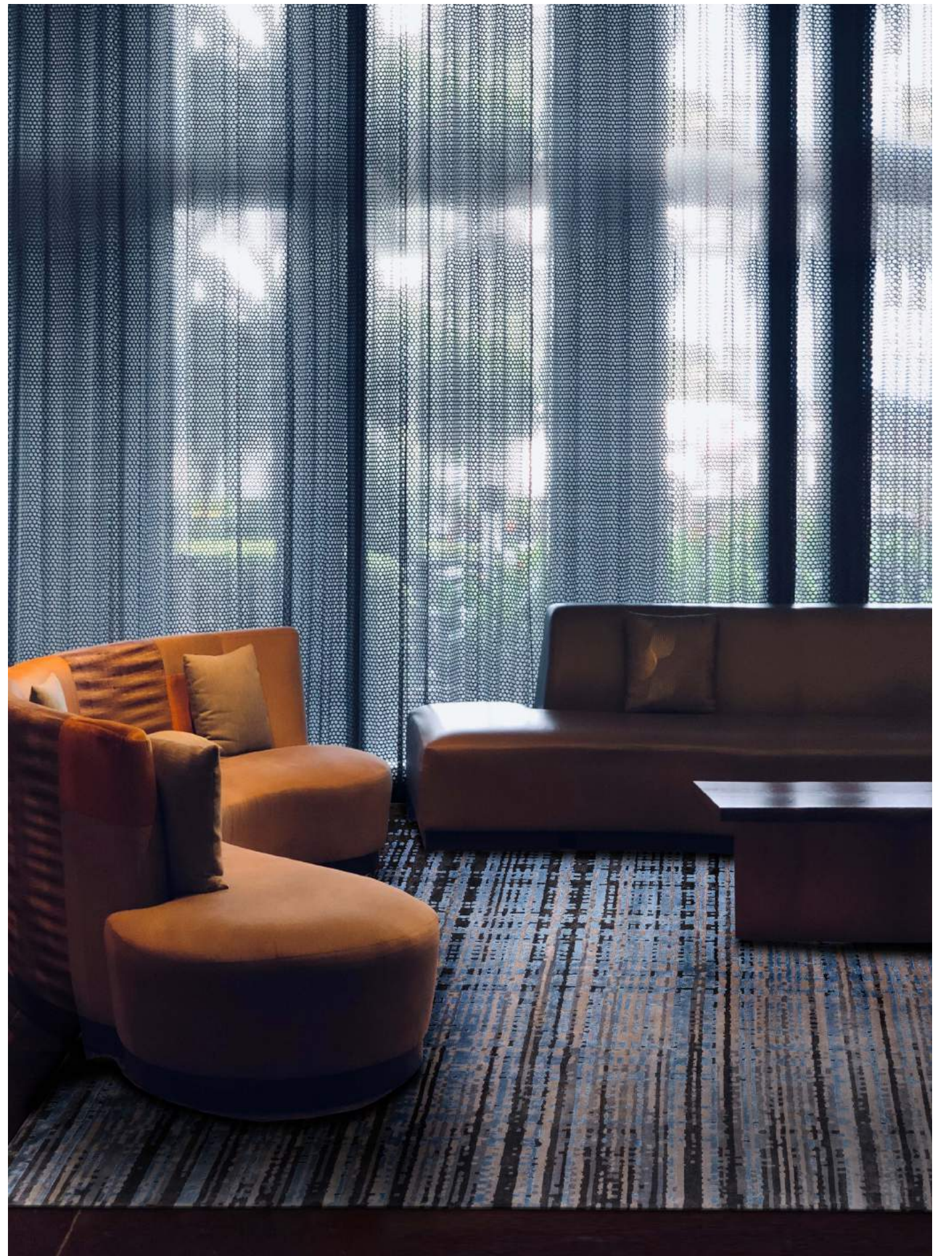
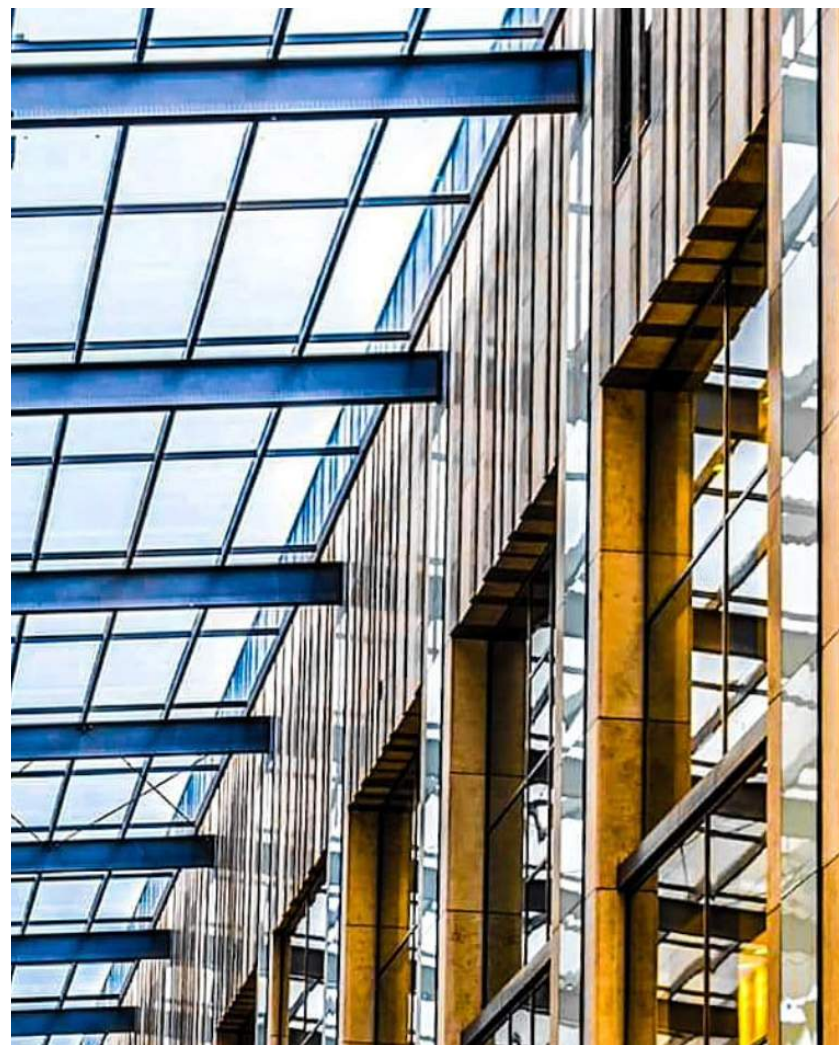


B
L
A
C
K
&
W
H
I
T
E





**G
E
O
M
E
T
R
I
C
A
L**

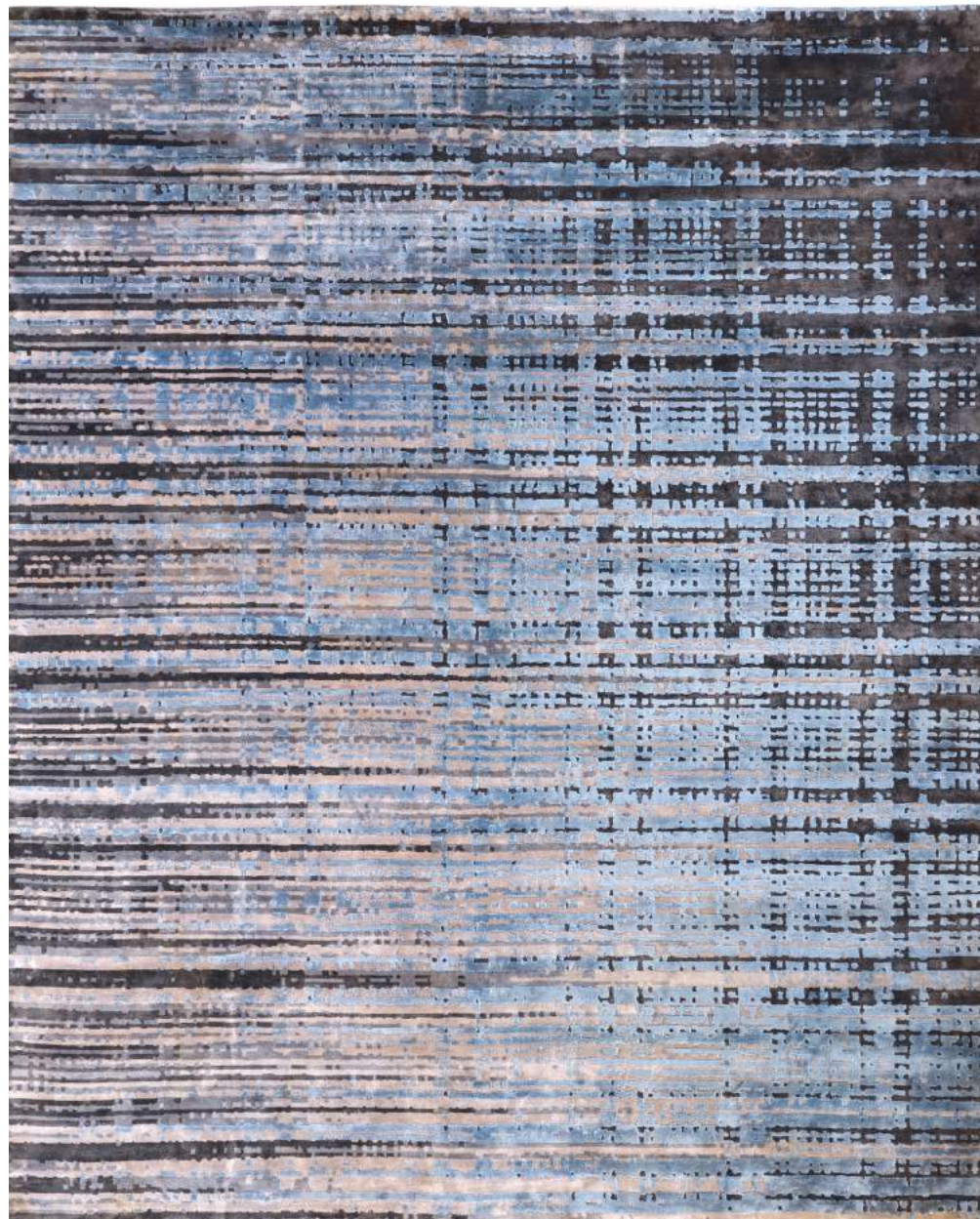


TARTAN

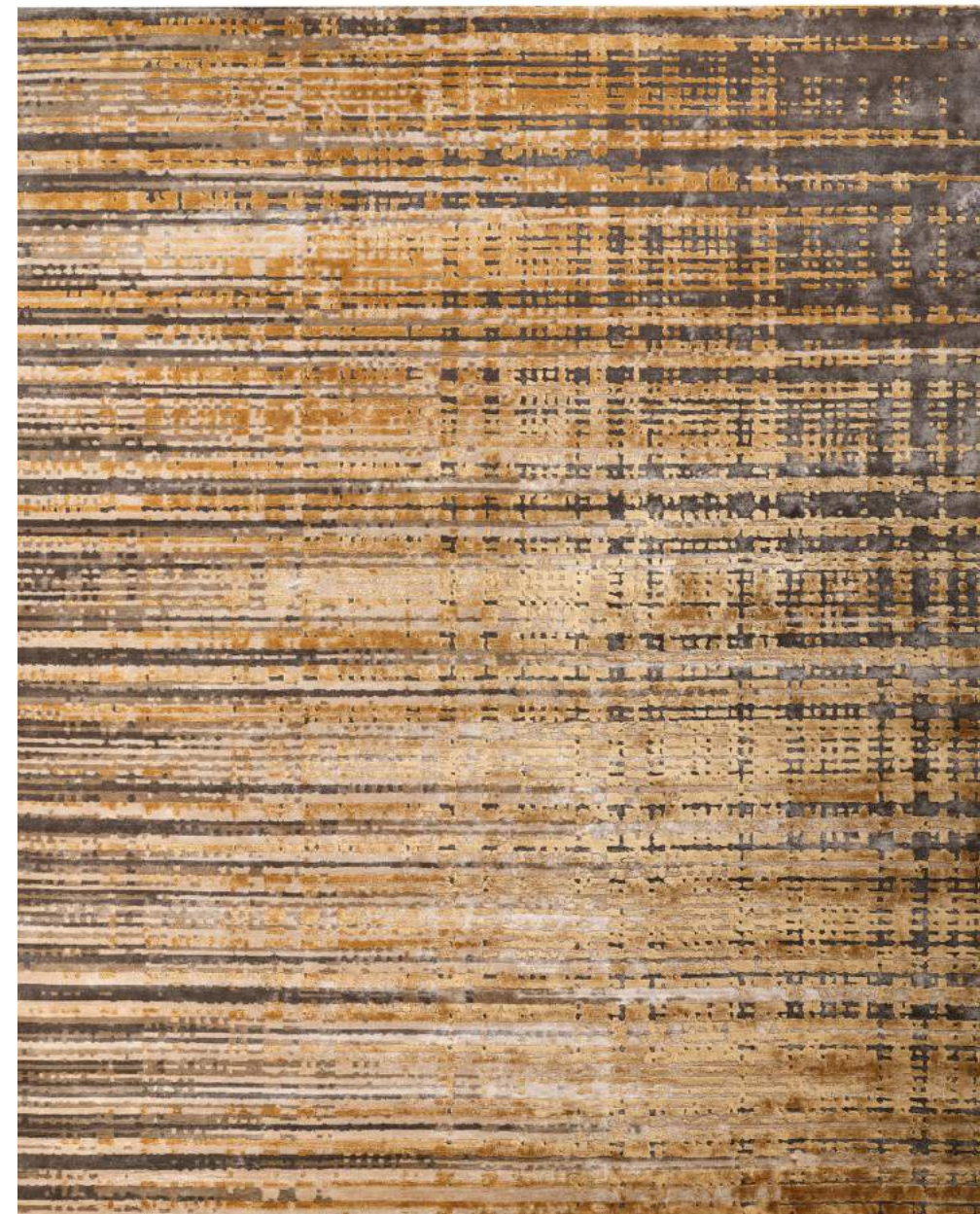
This shopping centre within an environment of complementary colours aligns people with a comfortable and harmonic mood. The carpet mimics the modern geometric pattern of the building exaggerating proportions and swooping angles.

B
L
U
E

Hand Knotted



Hand Knotted

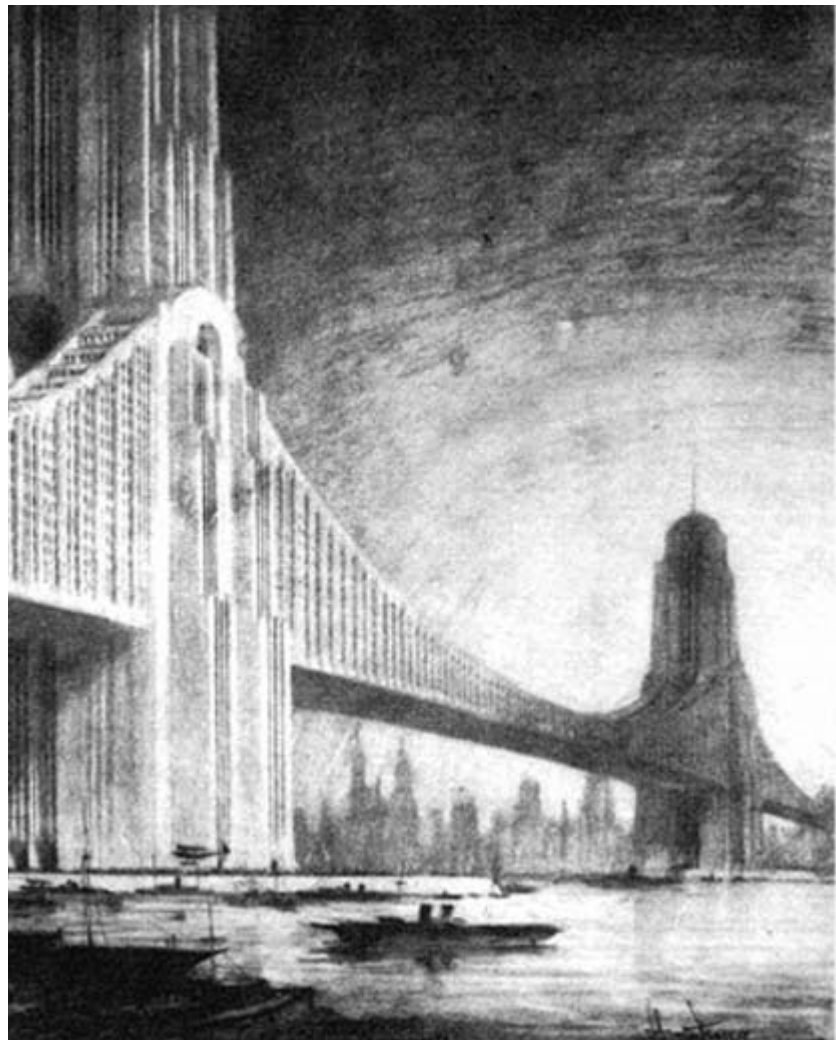


D
I
O
G





**A
B
S
T
R
A
C
T
I
O
N**



VIVID

The abstraction of the city life is the inspiration behind this carpet design. The mind-blending pattern and the monochromatic effect gives a feeling of surrealism. It shows the freedom of a city character and how art explodes in the urban space.

R
U
S
T

Hand Knotted

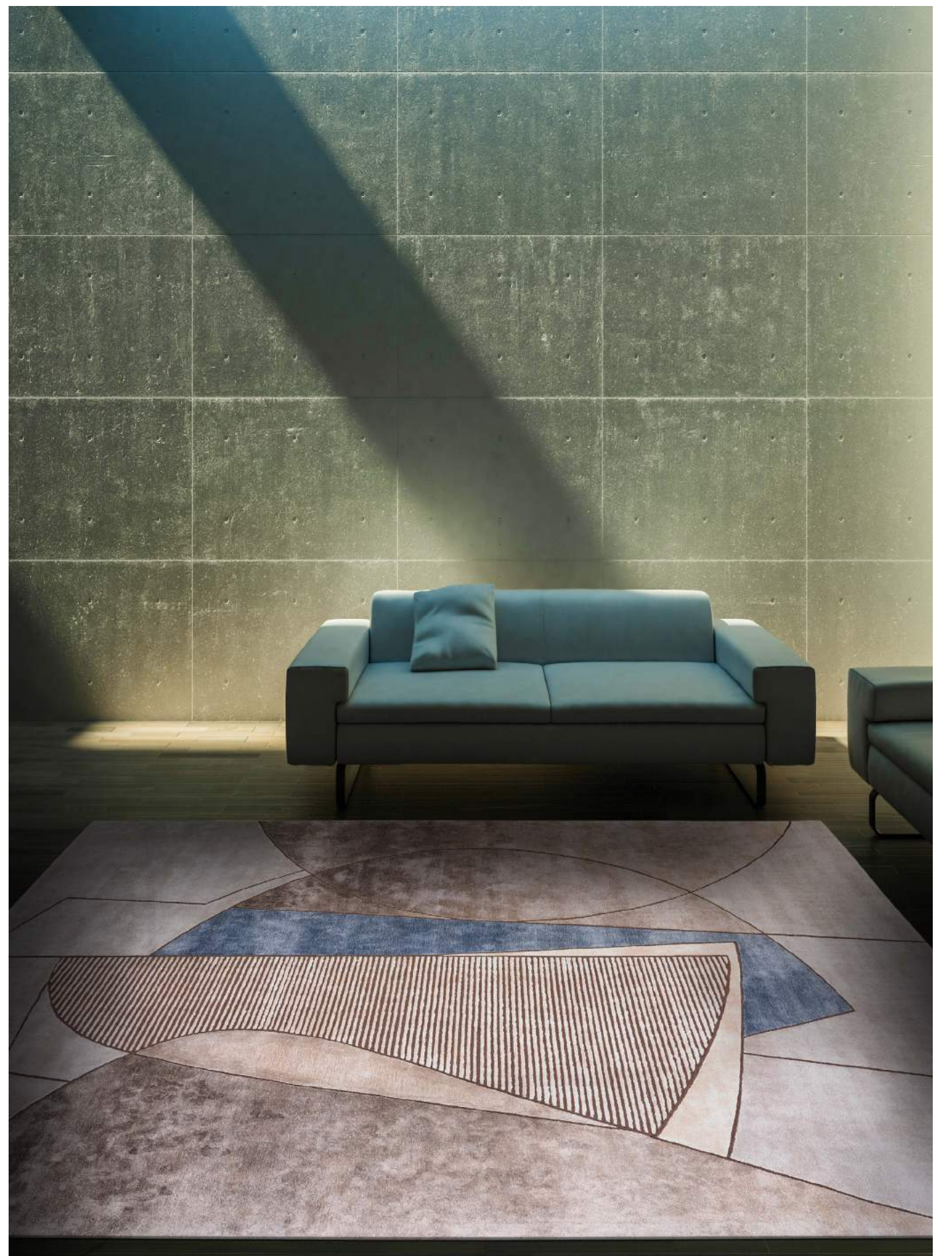


Hand Knotted



B
L
U
E

I
N
D
I
V
I
D
U
A
L
I
S
M



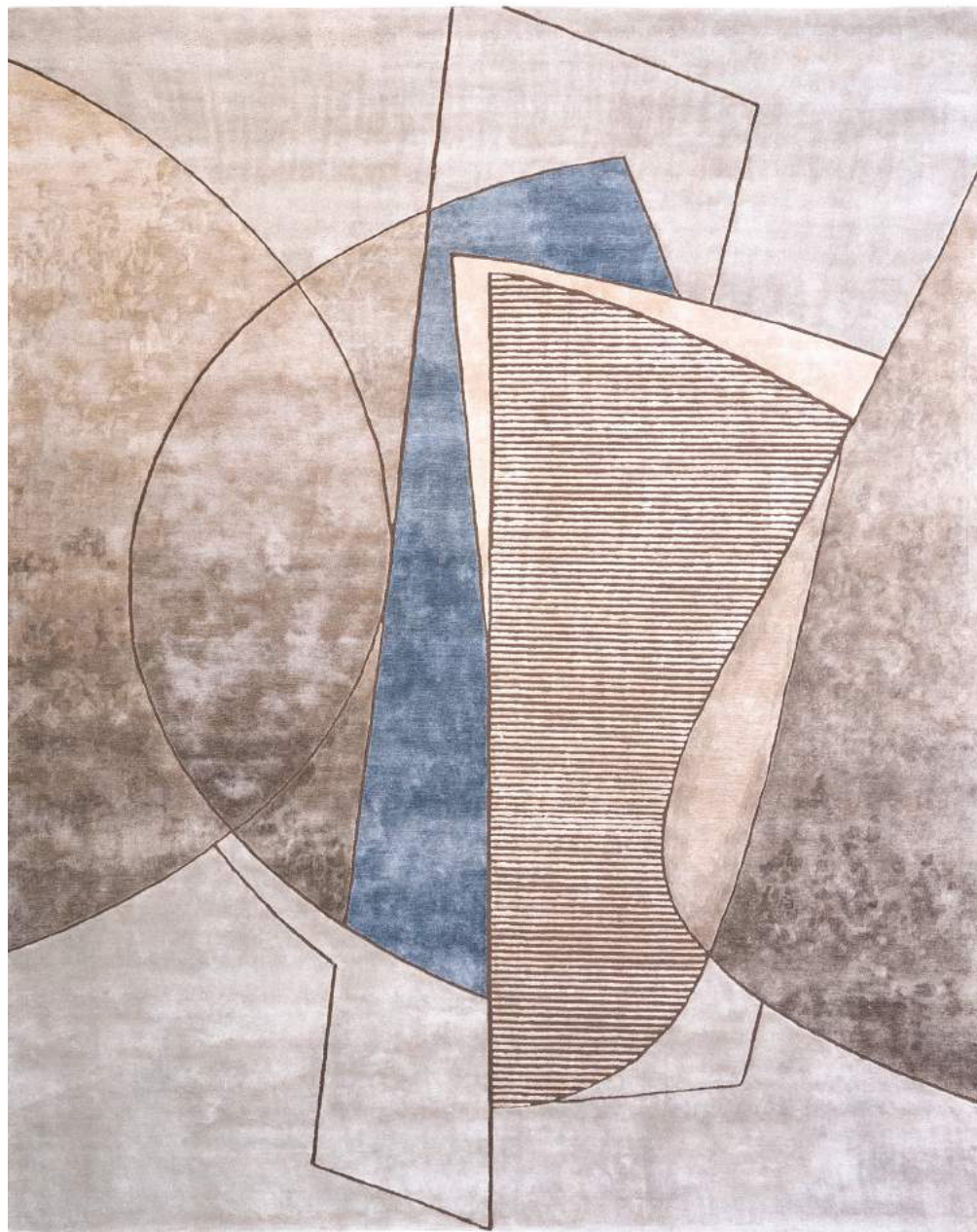
COLURE

The graffiti on the wall of a city exemplifies the co-existence of abstract art and urbansim. The carpet design is inspired by the pictorial explosion its creating. It signifies freedom, individualism, and the constant effort of correlating with the surroundings.

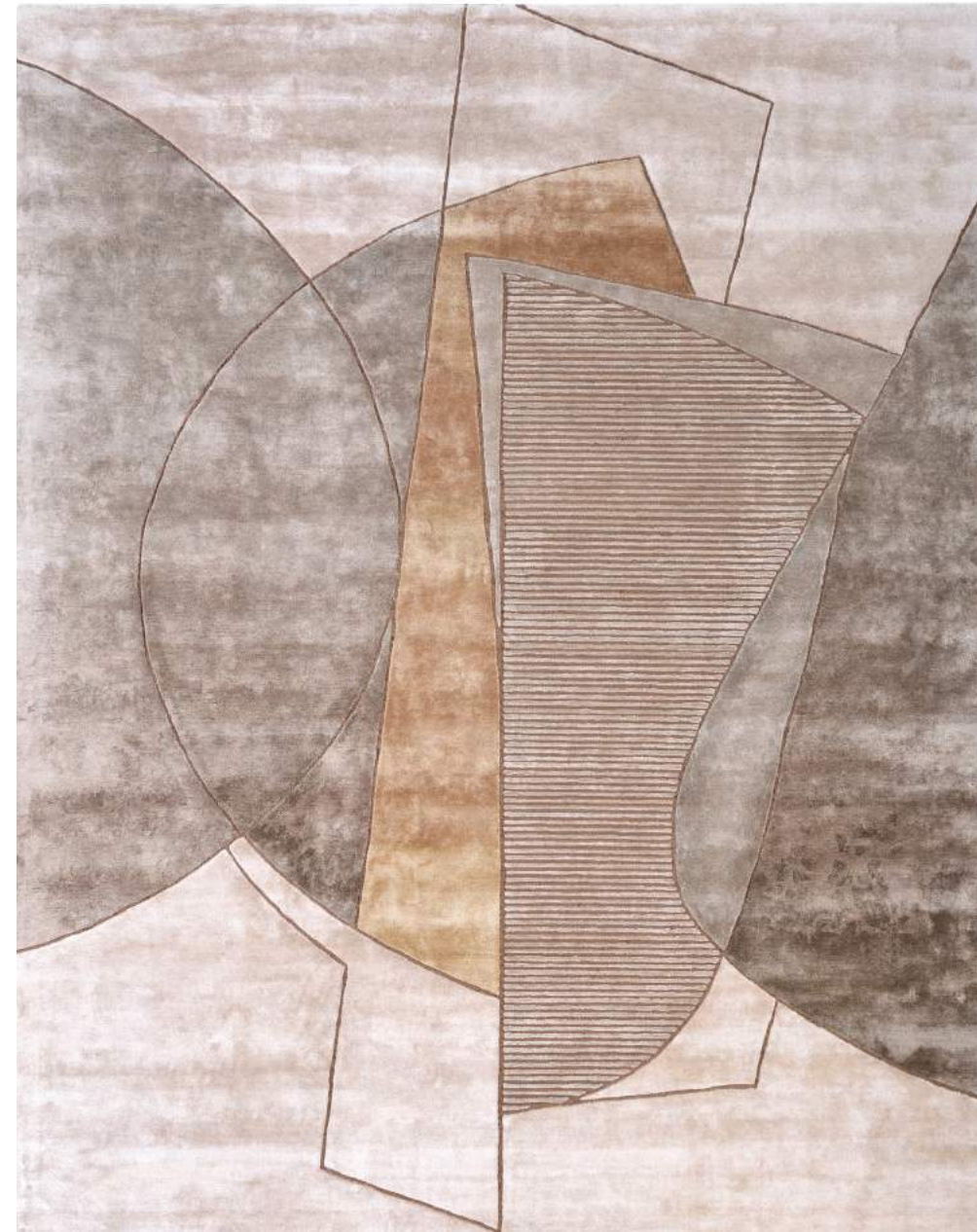
**G
R
E
Y

B
L
U
E**

Hand Tufted



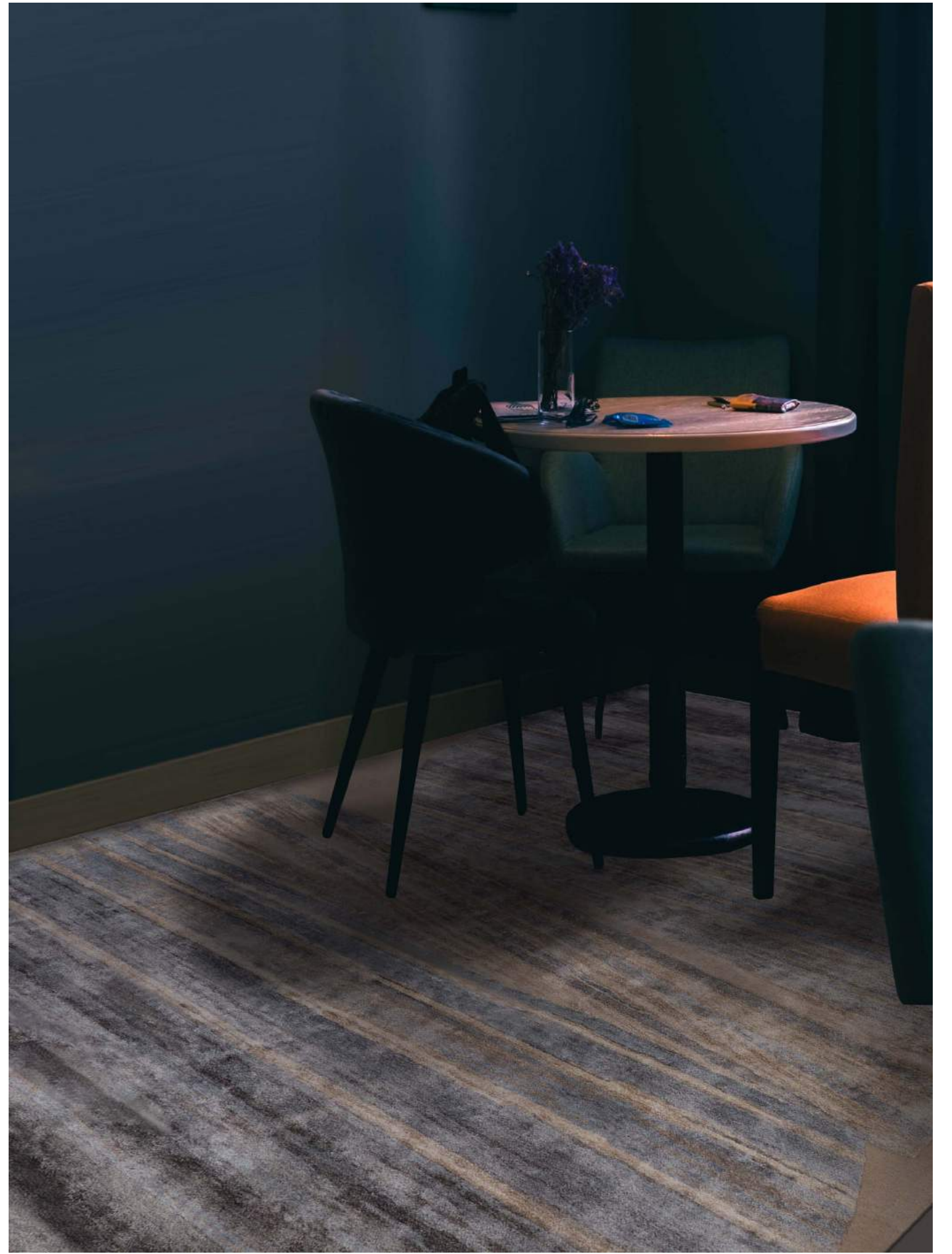
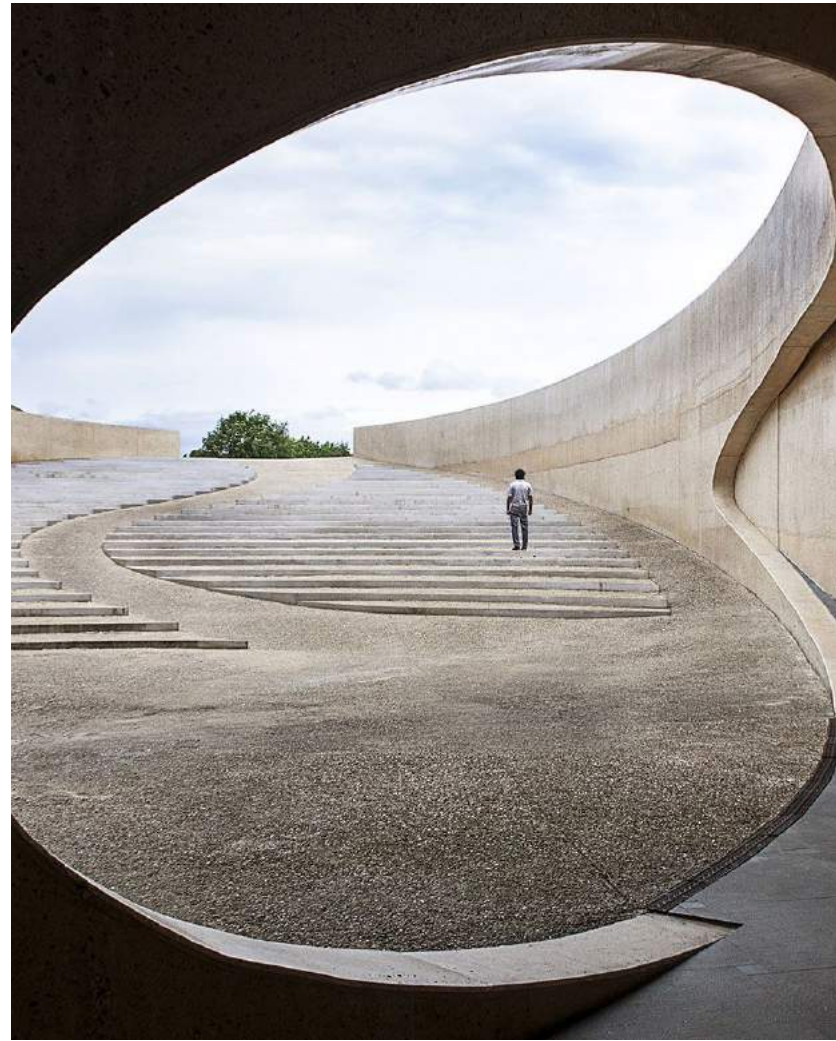
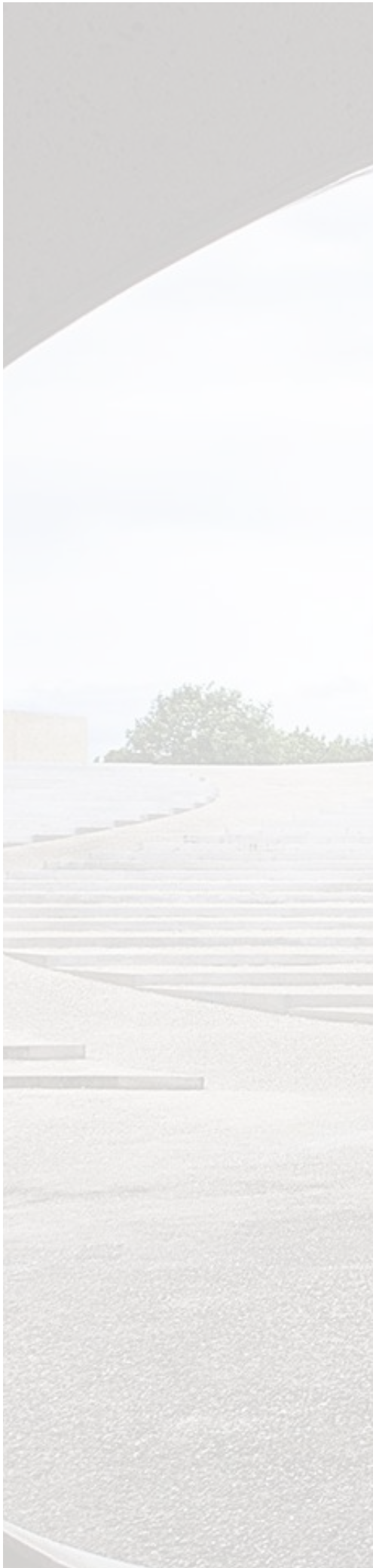
Hand Tufted



**S
I
L
V
E
R

B
E
I
G
E**

**O
P
T
I
M
I
S
M**



GENIAL

The Vroenhoven Bridge is a site that integrates several multifunctional spaces where cultural events are organized. The framework is very optimistic and the balance of the design evokes a naive modernism that is timeless. The carpet incorporates the linear elements and seamless curves of the architectural site into its design.

**G
R
E
Y**

Hand Tufted



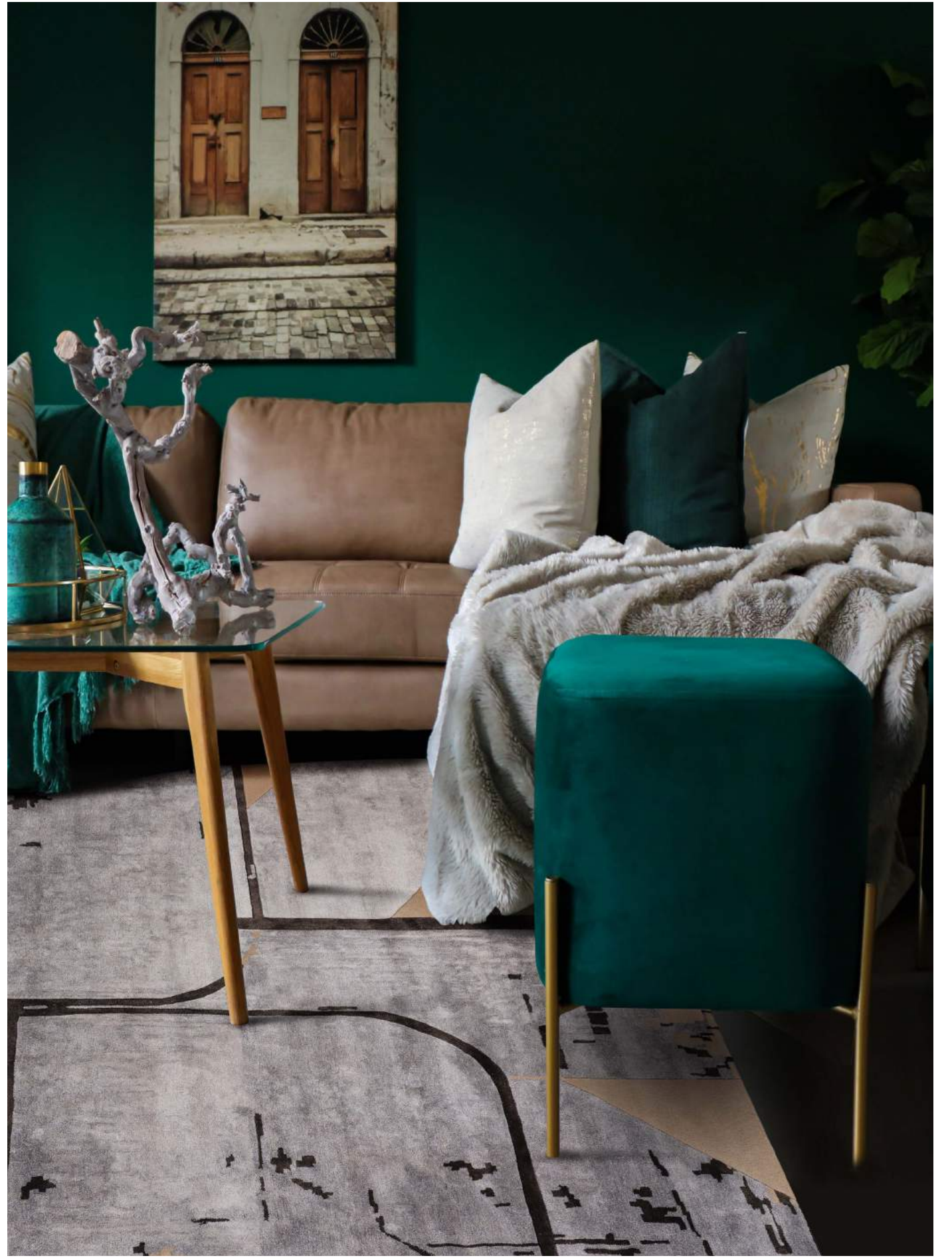
Hand Tufted



**B
R
O
N
Z
E**



I
N
T
E
G
R
A
T
I
O
N



GRAN

The angles, lines, triangles, squares and rectangles are all blending together somehow harmoniously. The carpet got its inspiration from the São Bento Railway Station in Portugal. The design insinuates the railway track and the coming together of different paths.

S
I
L
V
E
R

G
R
E
Y

Hand Tufted



Hand Tufted

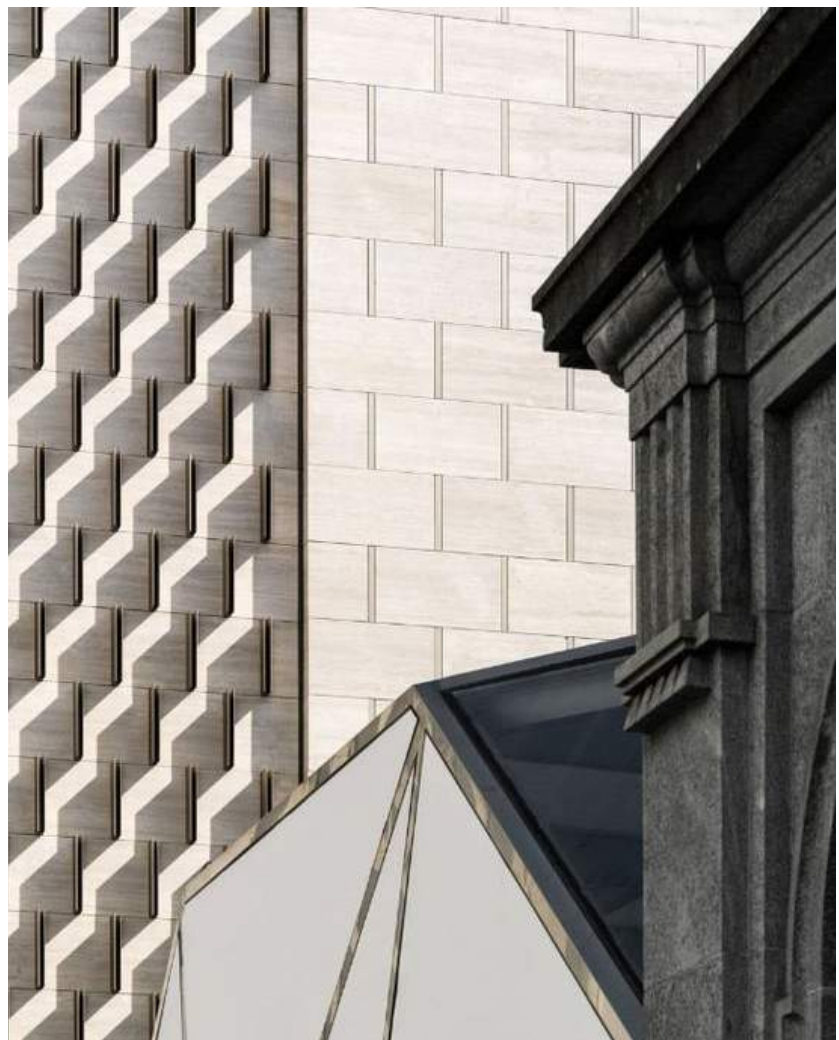


B
E
I
G
E

D
I
O
G



**E
X
P
L
O
R
A
T
I
O
N**



LLENO

La Rinascente has been the landmark for architecture, design, art and culture. The contemporary architectural design of this iconic building is the inspiration behind this carpet. The expressive design language has turned the traditional architectural landscape upside down embracing the linear layout of the road axes and squares in the city.

**B
L
U
E**

Hand Tufted



Hand Tufted

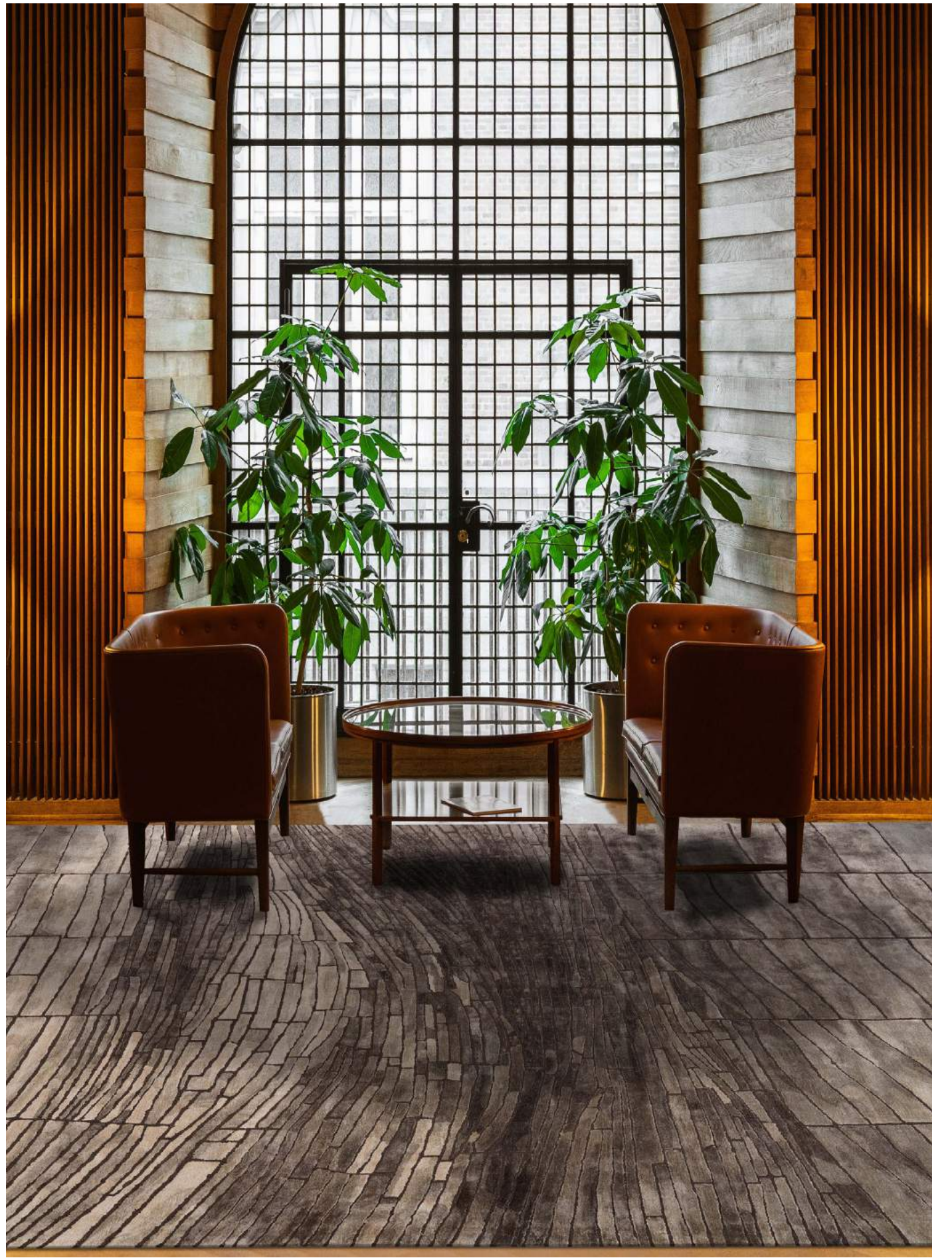
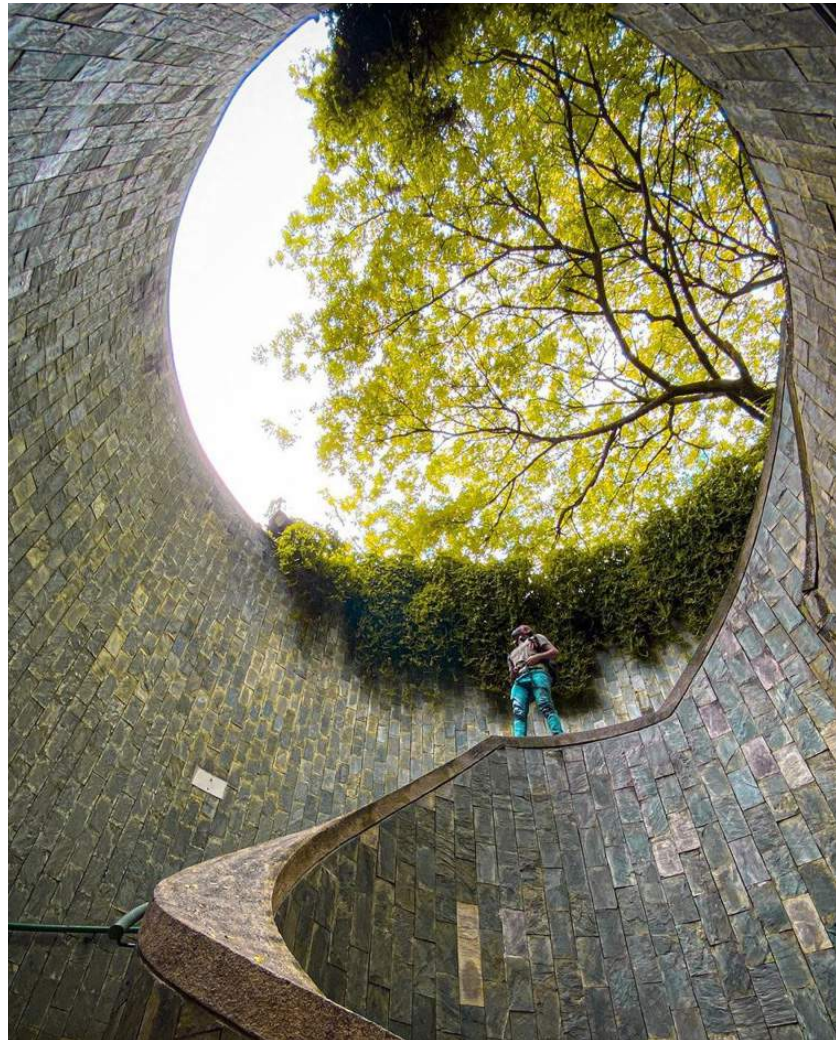
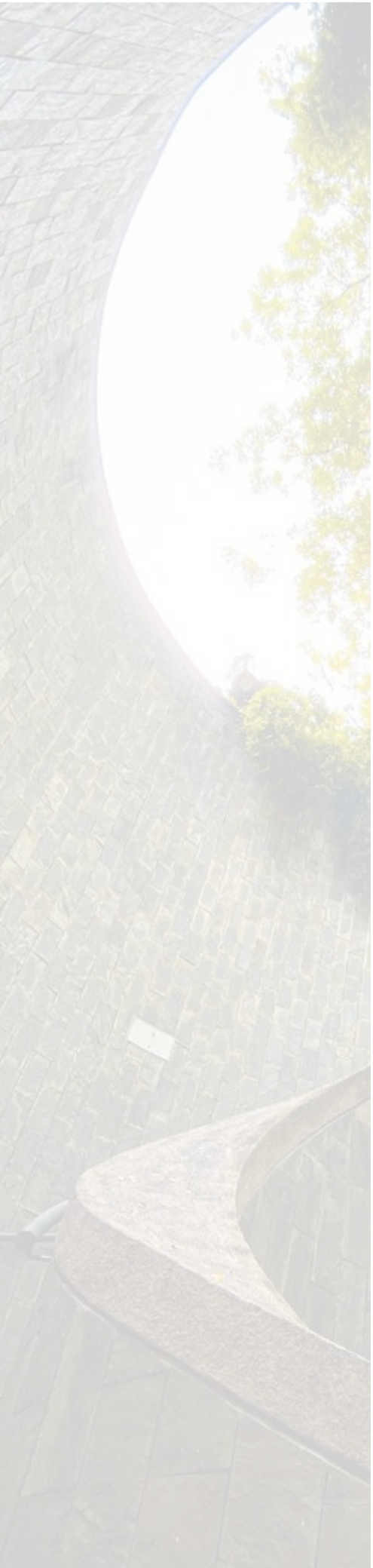


**R
U
S
T**



**G
R
E
E
N

U
R
B
A
N
I
S
M**



MELD

The Fort Canning Tunnel in Singapore is reminding us the relevance of green urbanism. The aim of this movement is to achieve a green and sustainable future and live a quality life. The design of the carpet highlights the significance of creating such havens within the city using concrete structures.

G
R
E
Y

Hand Tufted



Hand Tufted



G
R
E
E
N



**S
Y
M
B
O
L
I
S
M**

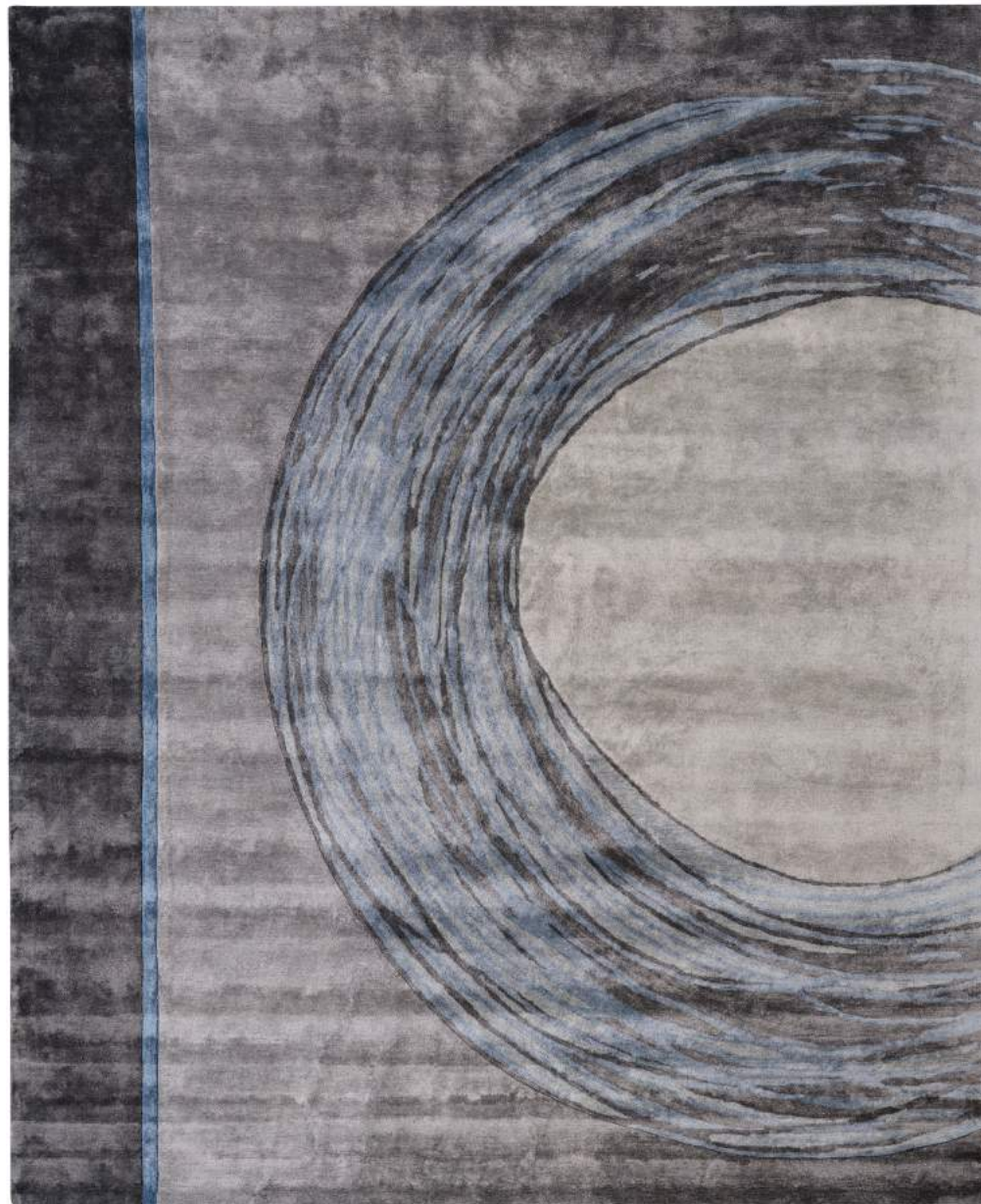


PURO

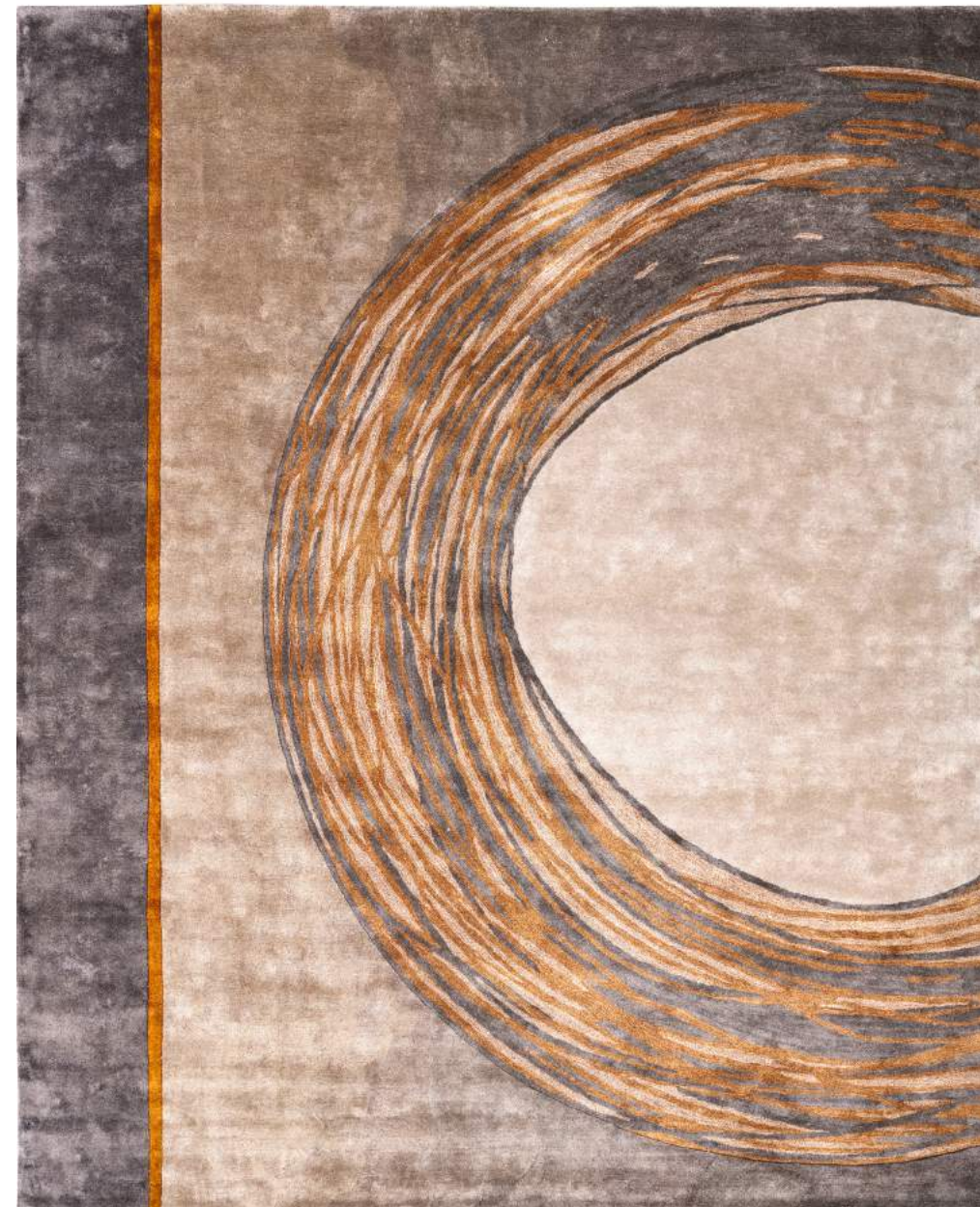
The structure of the “Memorial Hall of Israel’s Fallen” site compels us to rethink the role of art and symbolism in architecture. The undulating funnel like formation is replicated in the pattern of the carpet. The design signifies confinement and peace which is much needed in the era of urbanization.

B
L
U
E

Hand Tufted

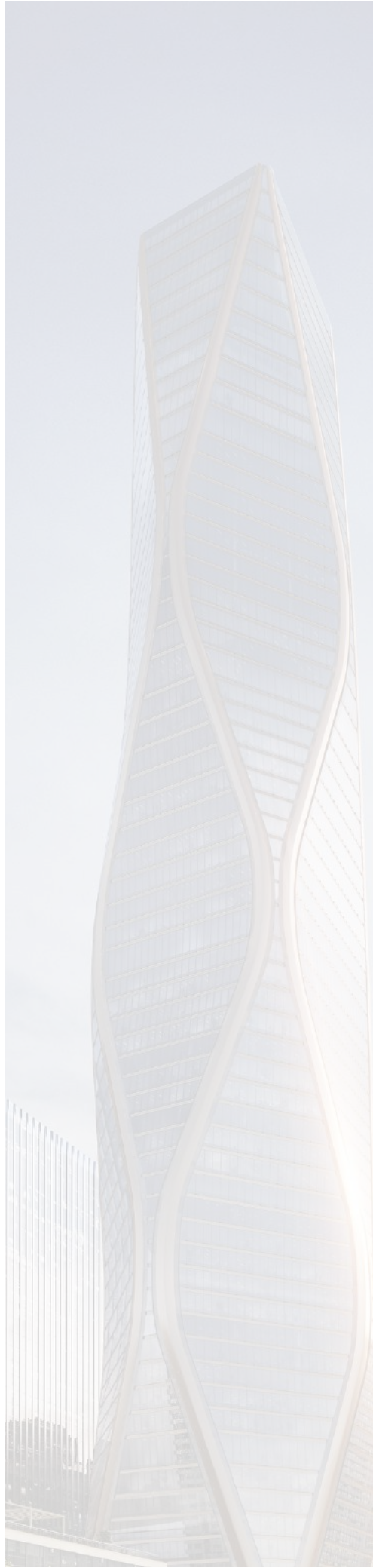


Hand Tufted



R
U
S
T





**F
L
U
I
D
I
T
Y**



TWINER

The twisted tower of Hangzhou Wangchao center in China is the balance of architectural planning and structural design. Skycrapers are the potent symbol of urbanization and they change the way people live in the cities. The expressive silhouette of the building has inspired the design of the carpet where fluidity was highlighted.

G
L
D

Hand Tufted



Hand Tufted

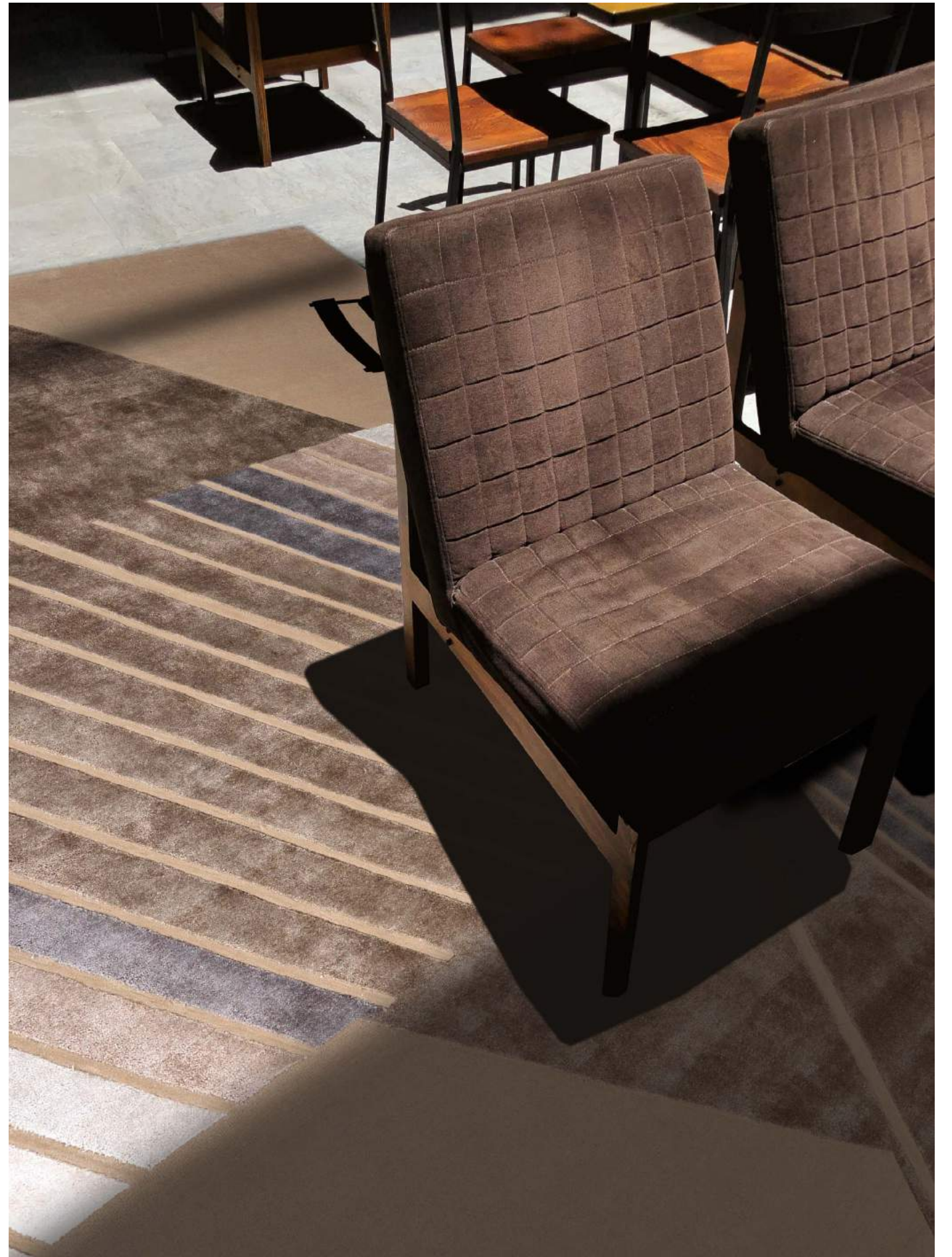
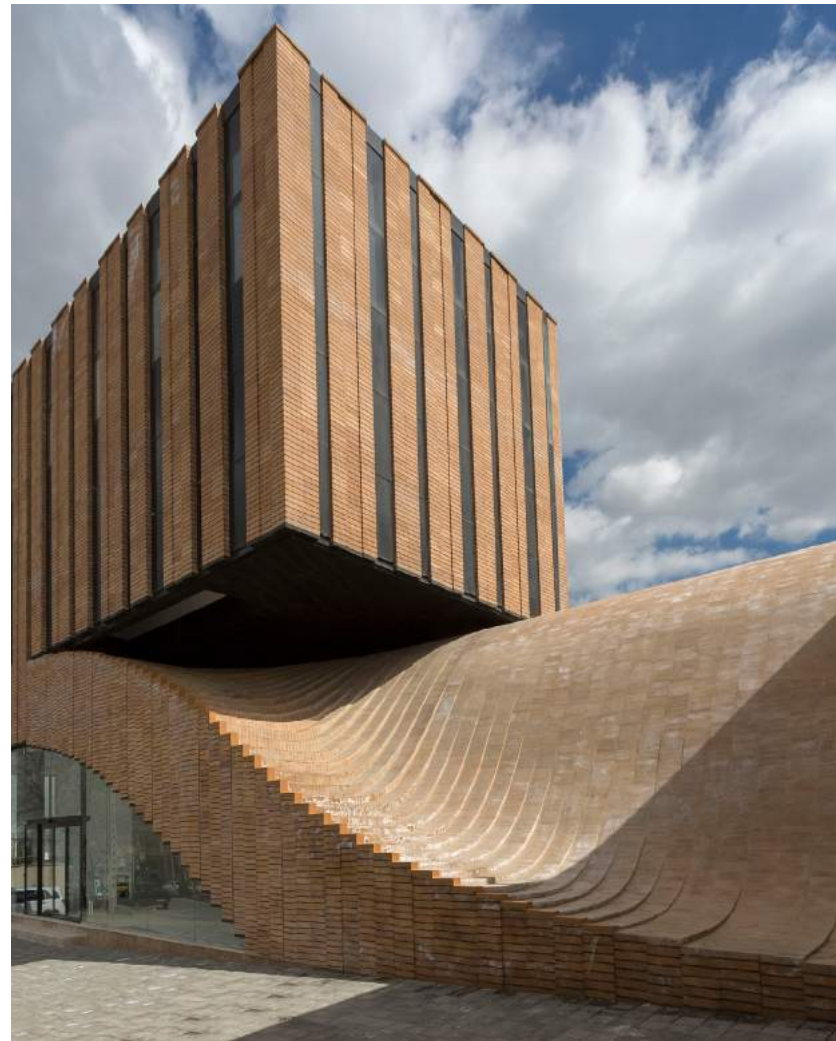


R
U
S
T





**M
O
B
I
L
I
T
Y**



UNICO

Termeh building in Hamedan has an active urban area which is symbolized by squares and a significant north-south urban axis that links them all together. The carpet desires to reinterpret the modernity of the design with new shapes and forms.

S
I
L
V
E
R

G
O
L
D

Hand Tufted



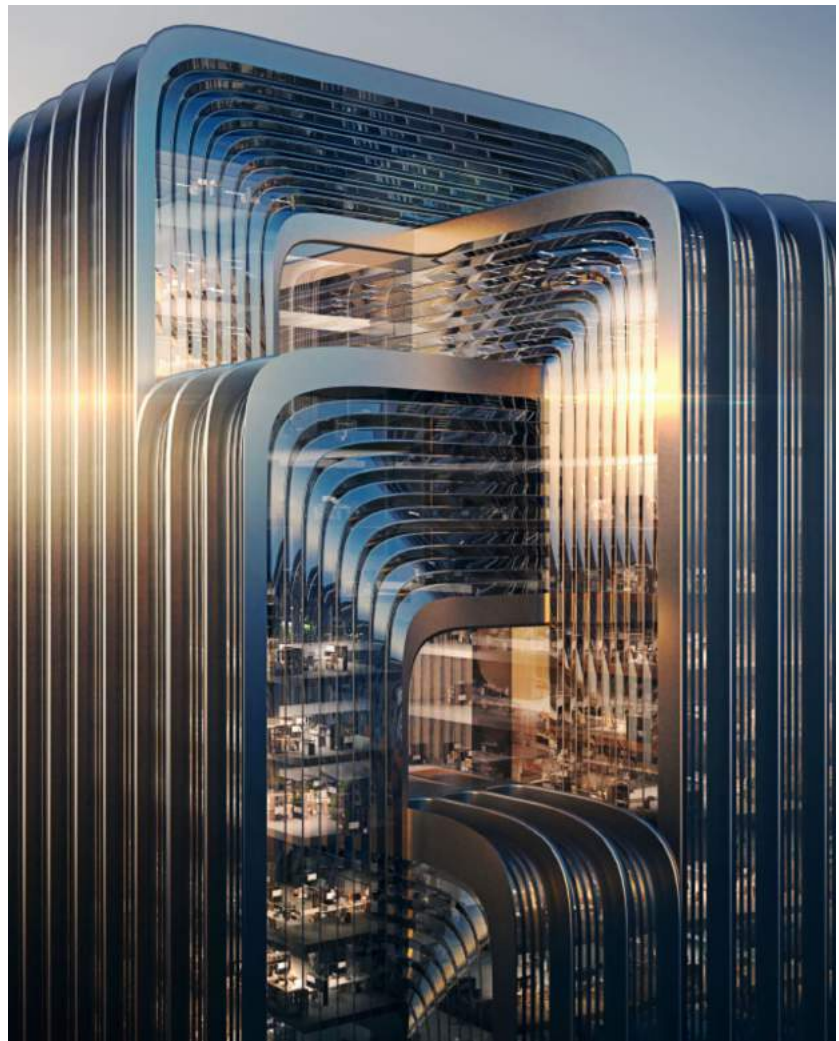
Hand Tufted



T
A
U
P
E



NO-HORIZON-ZONE



VENEER

This carpet got its inspiration from the CECEP Shanghai headquarters designed by the iconic architect Zaha Hadid who is celebrated for shifting the paradigms of architecture. The carpet is mirroring the same continuity and flow of these interconnecting lines which is embedded in the design of this urban campus.

R
U
S
T
T
A
U
P
E

Hand Tufted



Hand Tufted



B
L
U
E
G
R
E
Y



Hands[®]

fine handmade carpets since 1881

Delhi 372/74, Mehrauli Gurgaon Road, Sultanpur, New Delhi, India.
Call +91 11 2680 6475/8 | del@hands-carpets.com | www.handscarpets.com

Mumbai Unit No. 32R & 32H, Laxmi industrial Estate, Andheri (W), Mumbai India.
Call +91 22 2632 0609 | mumbai@hands-carpets.com | www.handscarpets.com

Dubai Hands Carpets FZ - LLC, Shop no.3, Ground Floor, Building 9,
Dubai Design District, Dubai, UAE (P.O. Box 333015)
Call +971 58 8250 464 / 574 | info@handscarpets.ae | www.handscarpets.ae

Singapore Hands Carpets Asia Pte Ltd. 39 Woodlands Close #03-59, Singapore
737856 Call +65 67788789 | info@handscarpets.asia | www.handscarpets.asia

Connect with us

