

Hands[®]

The Lithology
~Collection~

S t o r i e s o f E a r t h

A series of horizontal, wavy lines in a golden-brown color, creating a sense of movement and depth at the bottom of the page.

NEW DELHI • MUMBAI • DUBAI



STORIES OF EARTH

Created by the forces of nature
The earth's surface moves
Against the flow of water and time
Leaving a static memory
Of uncaptured geological beauty

fine handmade carpets since 1881

The Lithology ~Collection~

Landforms on the surface of the earth,
reimagined in an artistic dialect through our new
hand tufted carpet collection.

Hand tufted in wool and botanical silk.

3' x 5', 4'6" x 6'6", 5'6" x 8', 6' x 9',
8' x 10', 9' x 12'

Customisable to any size.





DELTA

Multiple layers of colour, in varying pile heights, present a picture of irregular sand deposits and land banks, above and below the water's surface. The closing journey of a river as it enters the sea.



DELTA RUST

DELTA GOLD



DELTA SILVER
TAUPE



DELTA RUST



DELTA GOLD



DELTA SILVER TAUPE



OSAR

Narrow ridges of stratified sand and gravel, formed by a stream flowing beneath a glacier; the ridges are the raised pile heights - the portions in colour, and the glacier the monotone base.



OSAR GREY BEIGE



OSAR RUST



ALLUVIA

Random deposits of sand and soil, formed by water lowing across the land, leaving behind a network of patterns; these are represented by the gentle variances in pile heights and colours.



ALLUVIA COPPER

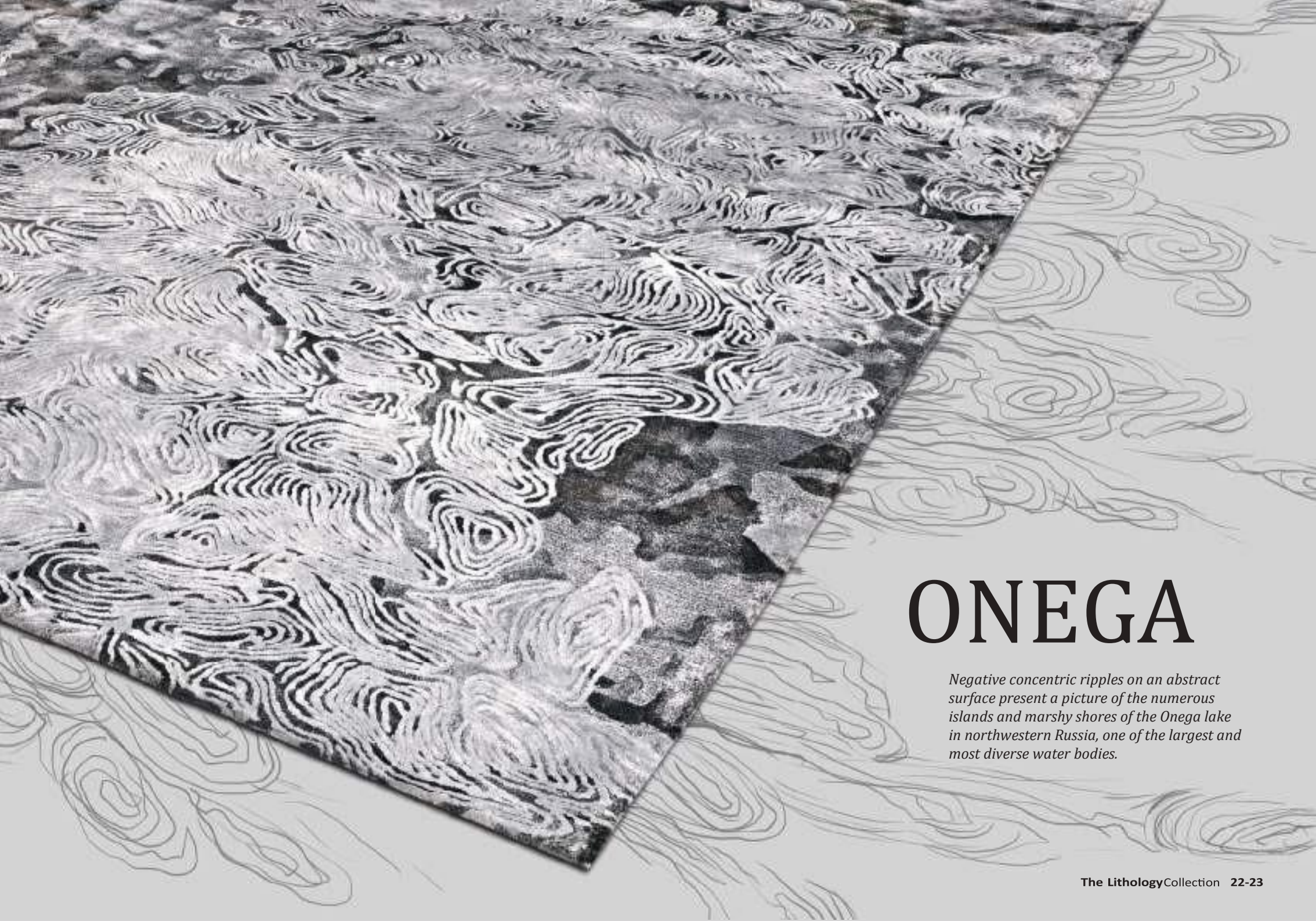


ALLUVIA BLUE

The Lithology
~Collection~

Stories of Earth





ONEGA

Negative concentric ripples on an abstract surface present a picture of the numerous islands and marshy shores of the Onega lake in northwestern Russia, one of the largest and most diverse water bodies.



OMEGA SILVER AMBER

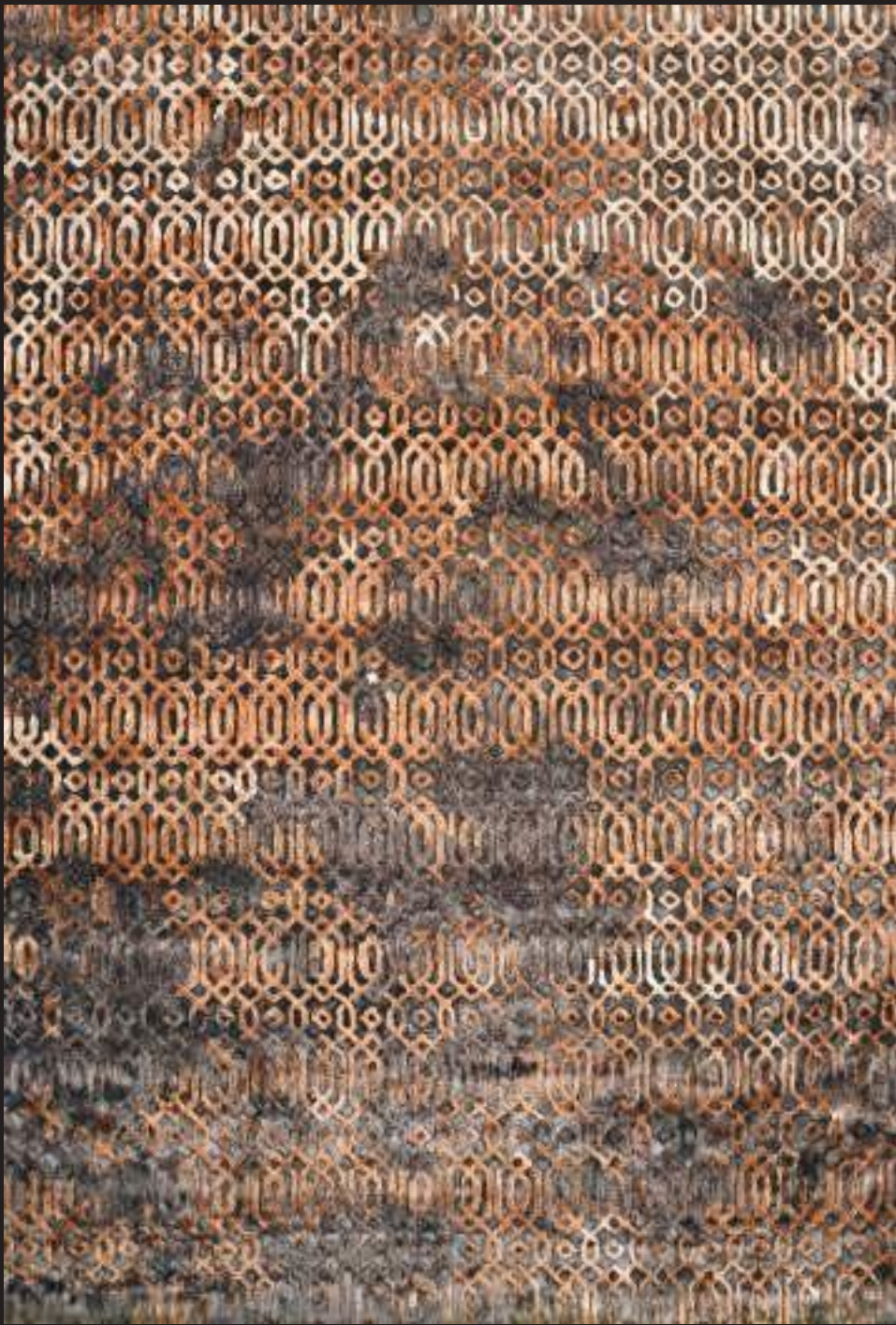


OMEGA TAUPE SILVER

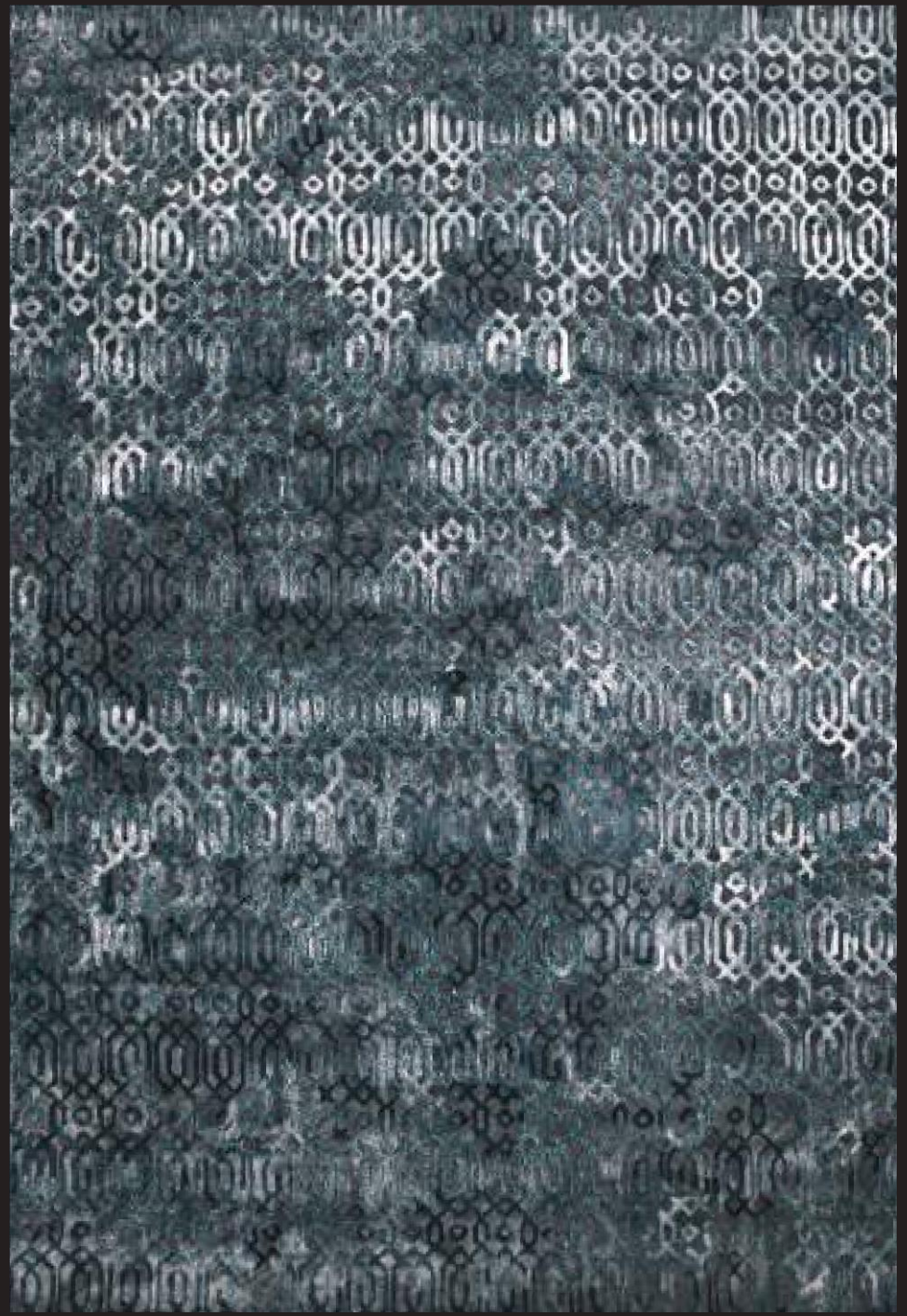


LAGOON

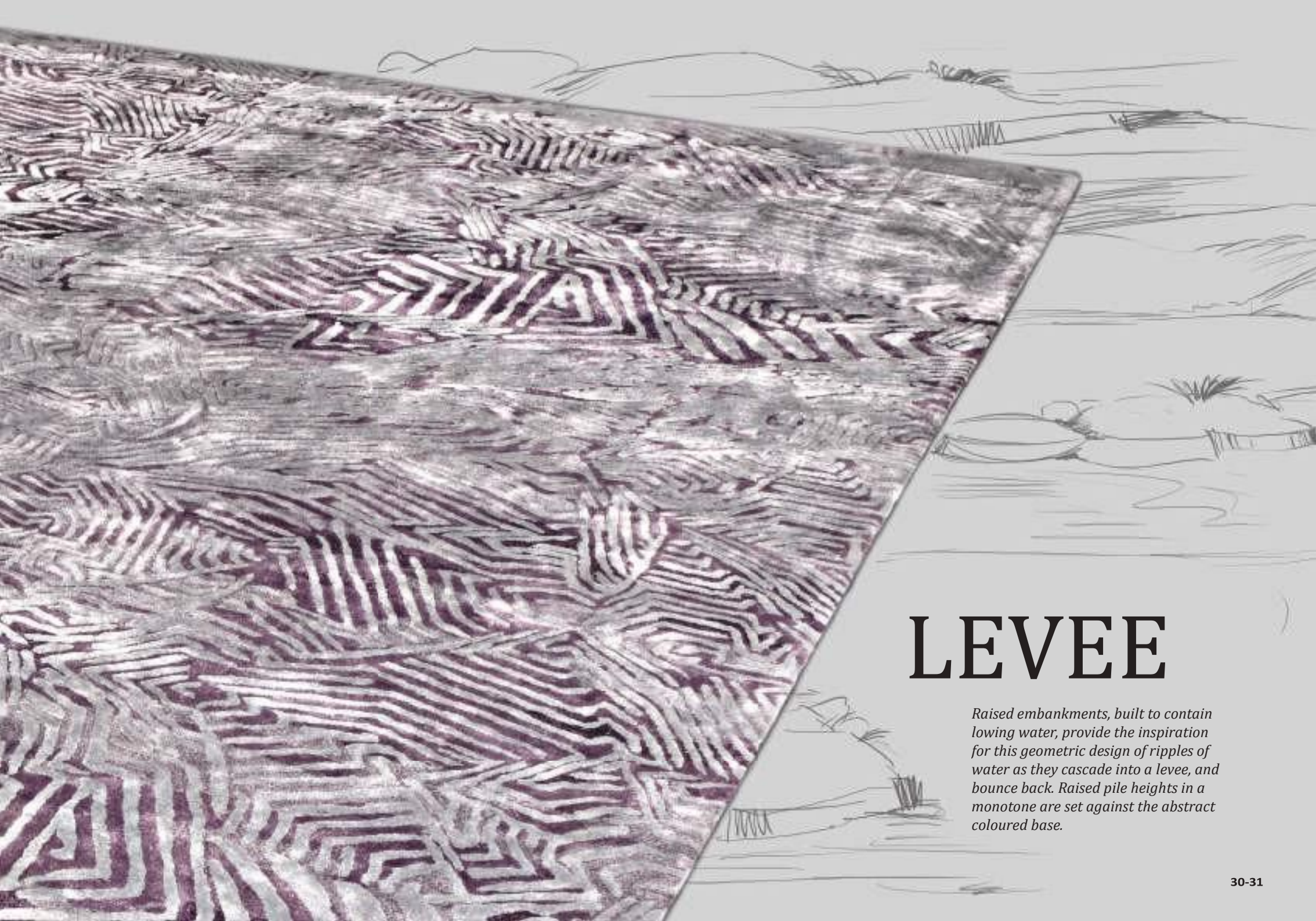
The word comes from 'laguna', the Italian reference to the waters of Venice. Dual hexagons overlap in a design that reflects the changing nature of language, alluding to the new meaning of the word - a freshwater mass separated from a saline one.



LAGOON AMBER TAUPE



LAGOON TURQUOISE



LEVEE

Raised embankments, built to contain lowing water, provide the inspiration for this geometric design of ripples of water as they cascade into a levee, and bounce back. Raised pile heights in a monotone are set against the abstract coloured base.



LEVEE MAUVE

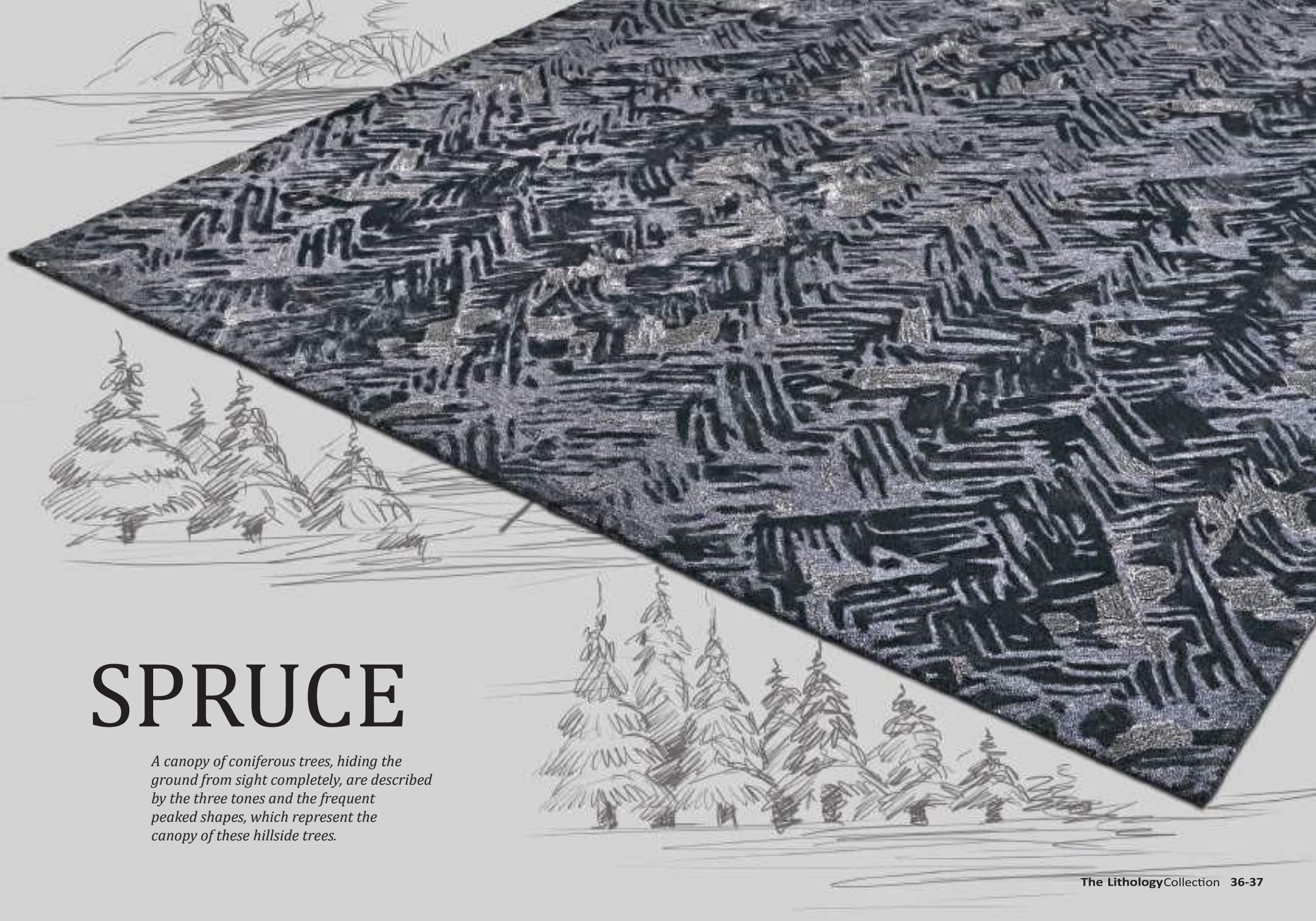


LEVEE SILVER TAUPE



The Lithology
~Collection~

Stories of Earth



SPRUCE

A canopy of coniferous trees, hiding the ground from sight completely, are described by the three tones and the frequent peaked shapes, which represent the canopy of these hillside trees.



SPRUCE CHARCOAL RUST



SPRUCE SLATE GREY



MASSIF

Multiple groups of shapely contours in colour mark the massif, a compact group of connected mountains, demarcated by lexures. These are indicated by the broken lines at the base, vanishing into the monotone surface.



MASSIF GREY TAUPE



MASSIF GREY GOLD



ARROYO

A dry stream bed, formed over time by rain and wind cutting into the earth, that seasonally fills and flows after sufficient rain, bringing life to arid areas. The lines of raised pile heights indicate the unpredictable nature of this eroded landform.



**ARROYO COPPER
CHARCOAL**

ARROYO BLUE



**ARROYO GREY
TAUPE**



ARROYO COPPER CHARCOAL



ARROYO BLUE



ARROYO GREY TAUPE

Hands[®]

The Lithology ~Collection~

S t o r i e s o f E a r t h

New Delhi (Flagship Store) 372/74, MG Road, Sultanpur. Call 26806475/8
Mumbai Gala No. 32R / 32H, Laxmi Industrial Estate, Andheri (W). Call 26320609

Dubai Hands Carpets FZ-LLC, Ground Floor, Building 9, Dubai Design District.
Call +971 58 8250 464 / 574, +971 4 589 8510.

www.handscarpets.com