



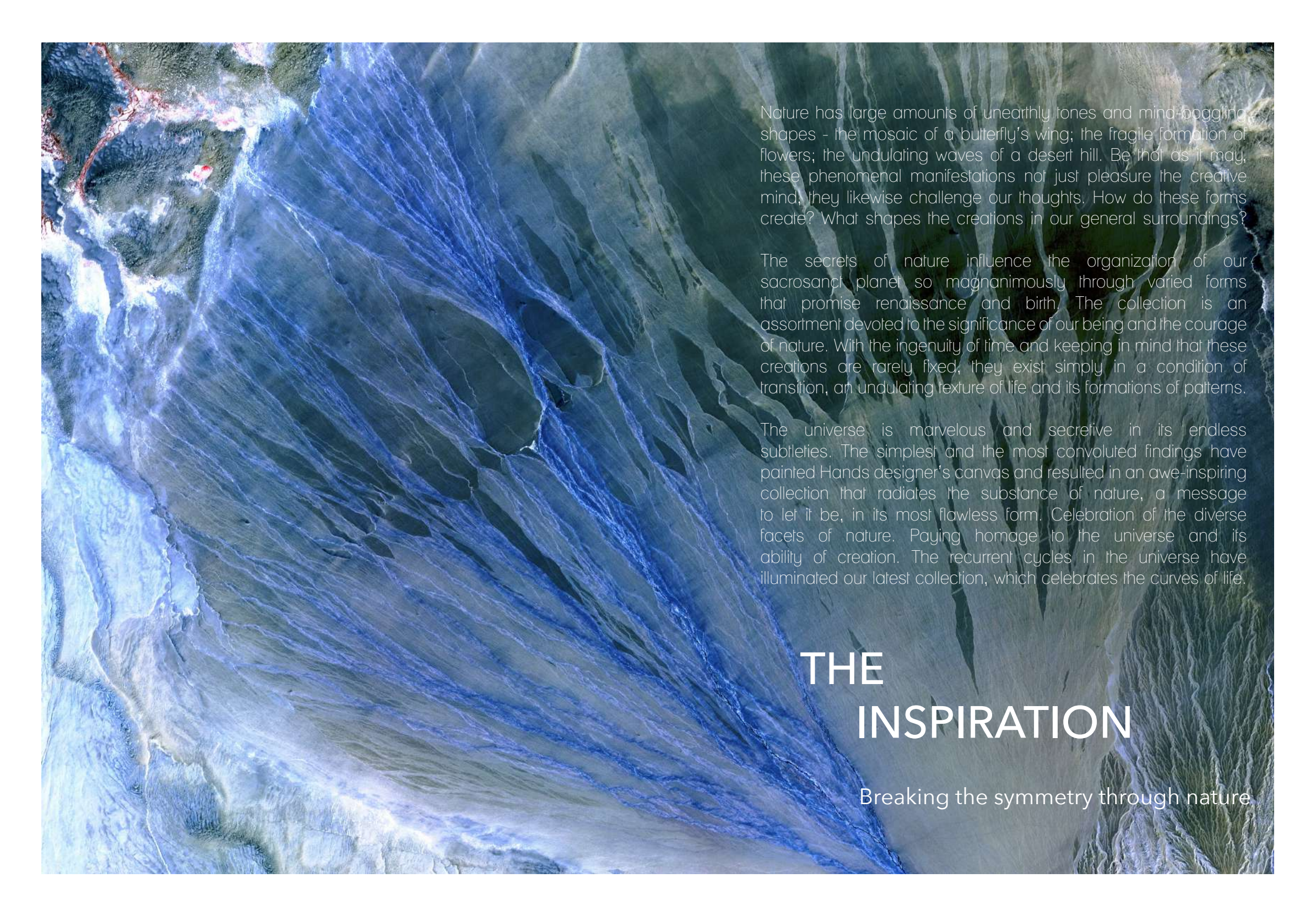
FORMA II  
Collection

Hands®

fine handmade carpets since 1881



Hands presents Forma II, enlivened by the camouflage of the nature which has motivated us to experiment with forms and shapes found in the organic world. The irregularities and asymmetry in nature is celebrated via Forma II collection.



Nature has large amounts of unearthly tones and mind-boggling shapes - the mosaic of a butterfly's wing; the fragile formation of flowers; the undulating waves of a desert hill. Be that as it may, these phenomenal manifestations not just pleasure the creative mind, they likewise challenge our thoughts. How do these forms create? What shapes the creations in our general surroundings?

The secrets of nature influence the organization of our sacrosanct planet so magnanimously through varied forms that promise renaissance and birth. The collection is an assortment devoted to the significance of our being and the courage of nature. With the ingenuity of time and keeping in mind that these creations are rarely fixed, they exist simply in a condition of transition, an undulating texture of life and its formations of patterns.

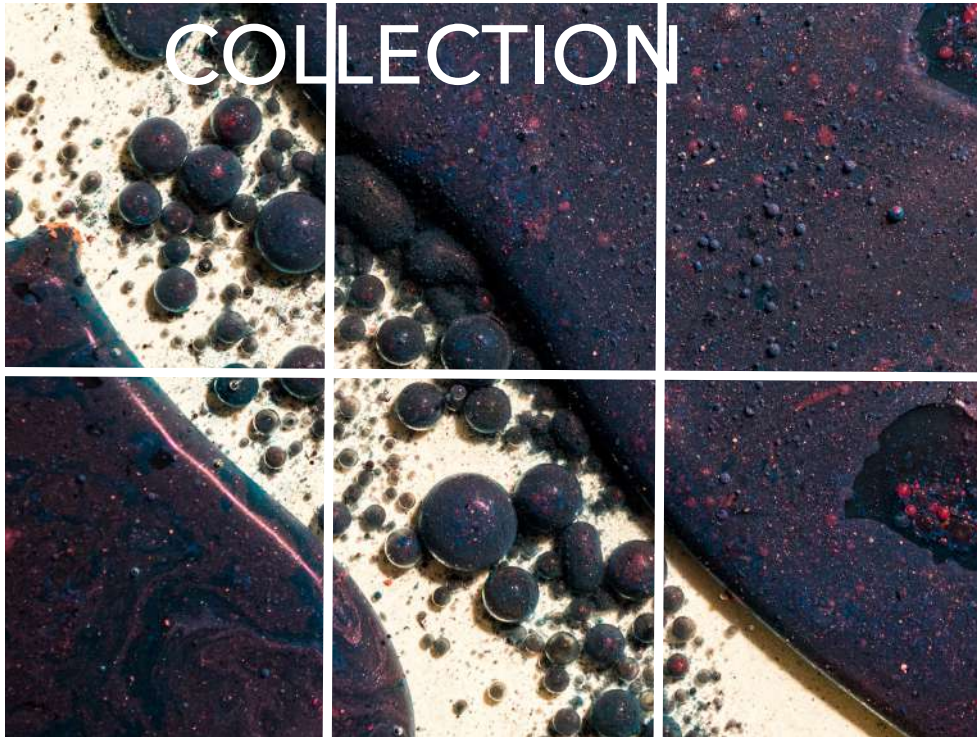
The universe is marvelous and secretive in its endless subtleties. The simplest and the most convoluted findings have painted Hands designer's canvas and resulted in an awe-inspiring collection that radiates the substance of nature, a message to let it be, in its most flawless form. Celebration of the diverse facets of nature. Paying homage to the universe and its ability of creation. The recurrent cycles in the universe have illuminated our latest collection, which celebrates the curves of life.

# THE INSPIRATION

Breaking the symmetry through nature

# THE

# COLLECTION



Forma II collection encompasses themes and patterns of creation and birth, curves of life, forms in nature, geometry and abstraction of astronomical shapes and a utopian vision. A recreation rather than replication of regular structure or shapes; the forms are ambiguously suggestive of those normally found in the natural surroundings. The collection follows a long-held fascination with the organic, the branches and roots of a tree, curves of a burning volcano, geometric patterns formed by the broken ice of a glacier, the cosmic mystery or the formation of organisms.

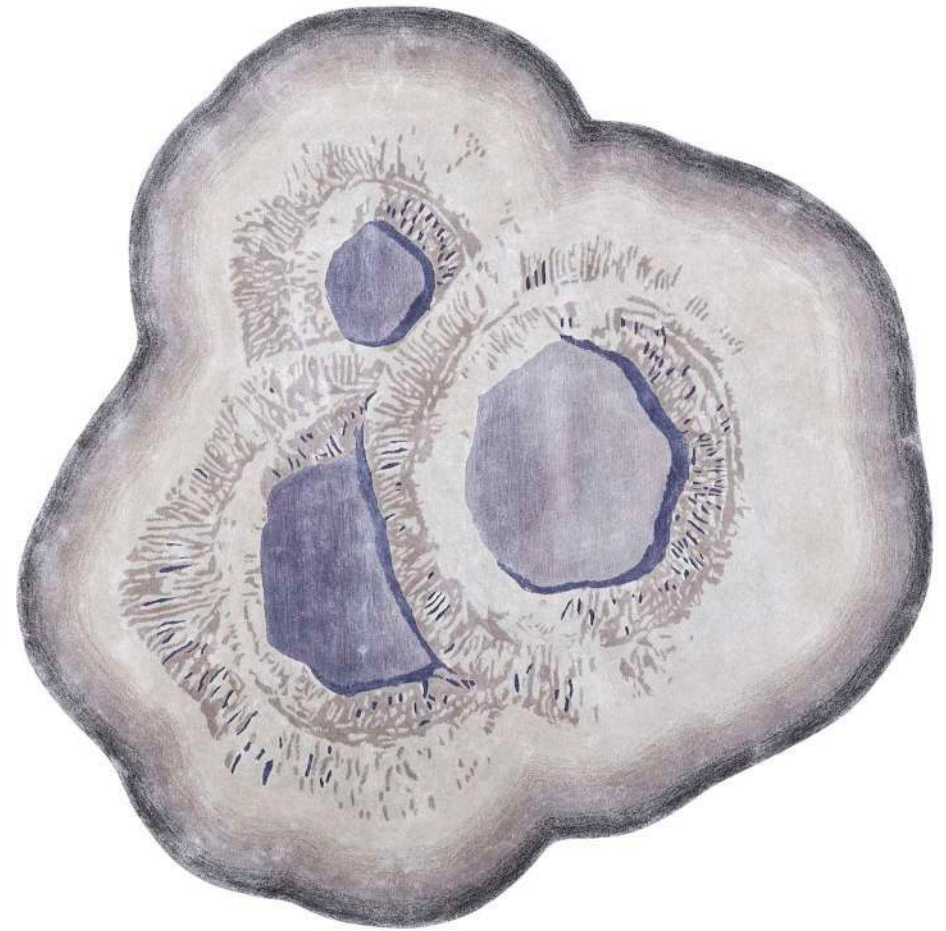
The pieces evoke certain modernism and an artistic expression of Hands creative world. The carpets are the realization and embracement of nature's magical forms. Compared with conventional and traditional silhouettes, irregular and shaped rugs are fun and an emerging trend. Inspired by the nature in its genuine and naked form, these carpets are welcoming and futuristic. The collection is an approach to nature's offerings and its manifestations.

SERIE I | MODERN  
SERIE I | MODERN  
SERIE I | MODERN  
**SERIE I | MODERN**

12 modern forms snaking their way to the Forma II collection. Finely hand tufted in Wool and Viscose. Some of the carpets are quite literal while some might not be a direct representation of the elements but are blended in a more contemporary reference. The designers have reduced the complexities of forms to their basic geometrics and artistic abstraction and orchestrated them with the design paradigms. It is the result of the emerging need for renewing the aesthetic and conventional design language and experiment beyond the traditional principles of geometry.



Mushrooms are magic beneath us and they have been the inspiration for many designers across varied industries. They represent rebirth, rejuvenation and regeneration. Hands has taken the literal path in depicting the form of a mushroom which is evocative of the natural world - intricacy of the mushroom cap and the fine strings of mycelium. The design imitates the look and form of a mushroom in an effort to explore the natural world, past human impedance. The mycelium universe beneath every step we take on the carpet.

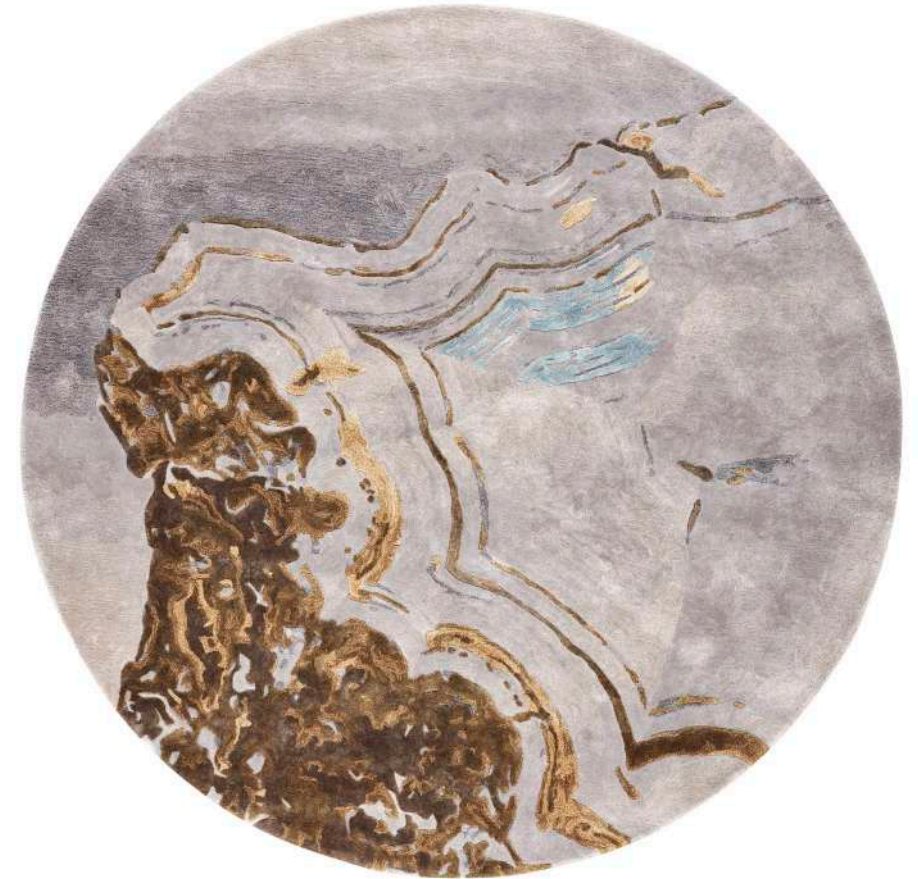


## FEYRE

Hand Tufted in 100% Viscose  
Size 6'6" x 6'6"

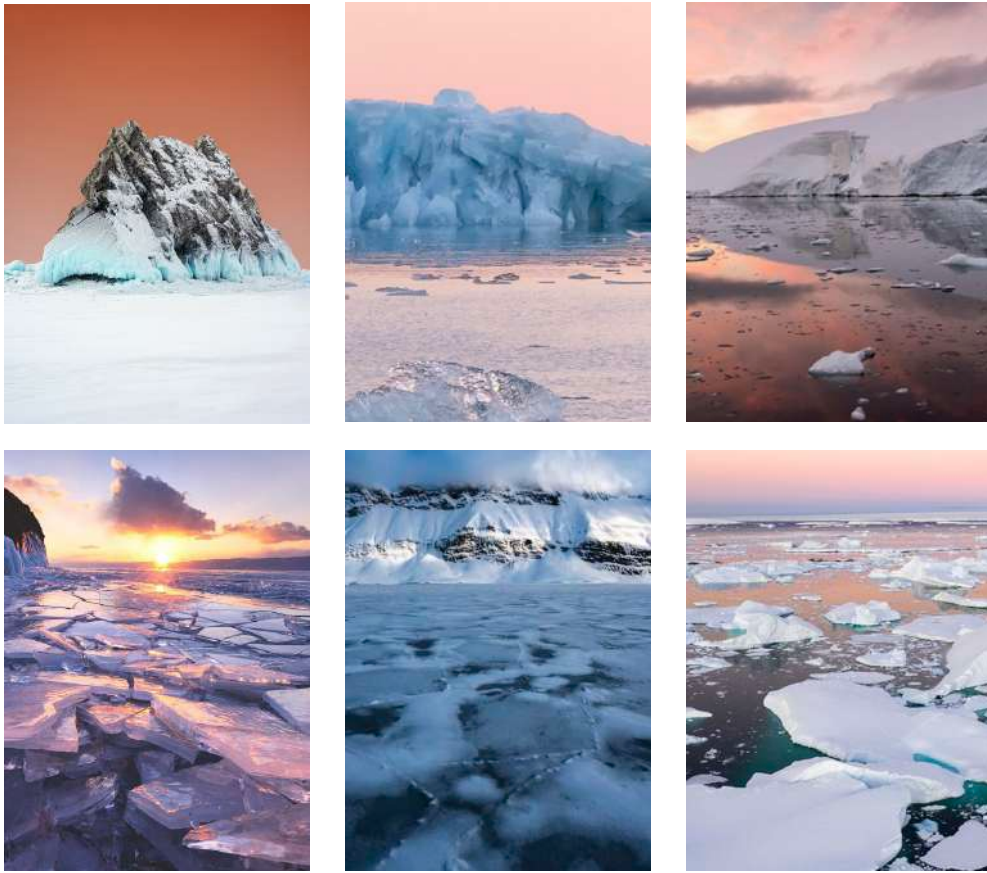


A look at our planet Earth from outer space. It is a picture of our planet without public boundaries, without ordered progressions. It appears as absolutely one real life form. The formation is a circle, mirroring our home and furthermore, the cyclic and rhythmic movement of all processes in nature. The layers represent the interconnectedness of Earth, the soil and the water bodies creating mirages and bizarre shapes and patterns. A spherical heavenly body, displaying beautiful nuances of our planet was the inspiration behind the design and shape of the carpet.

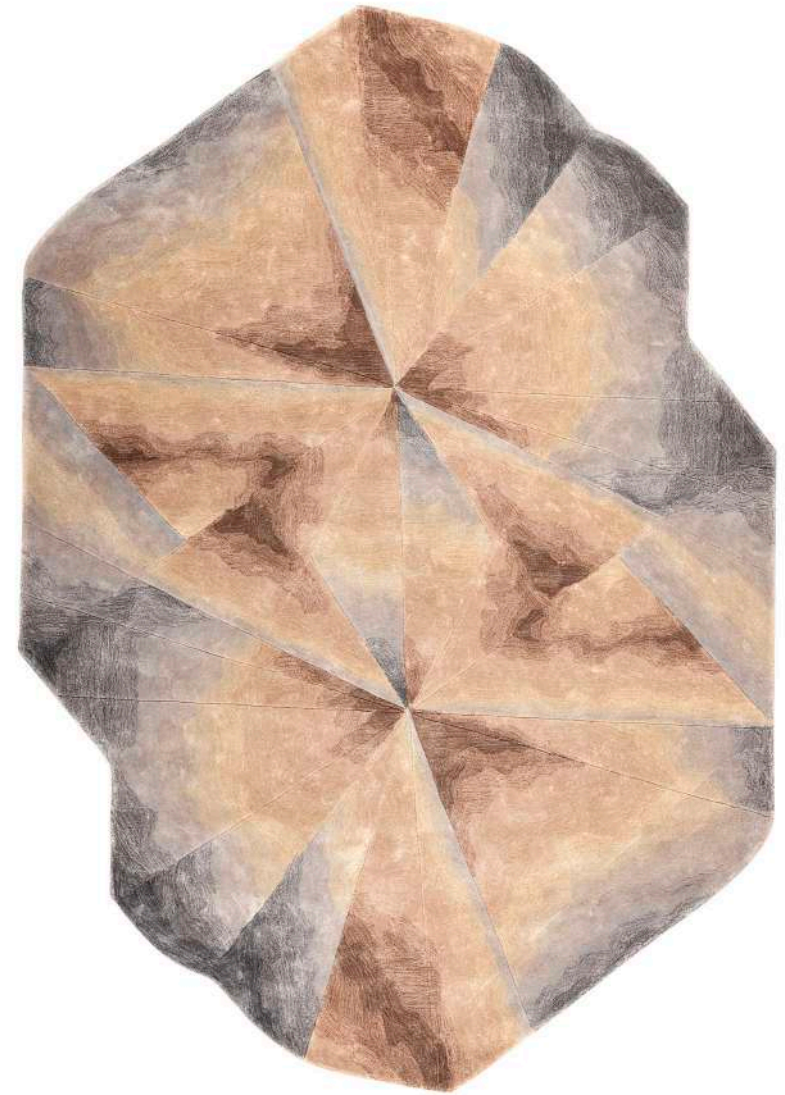


## GAIA

Hand Tufted in 100% Viscose  
Size 7' Dia



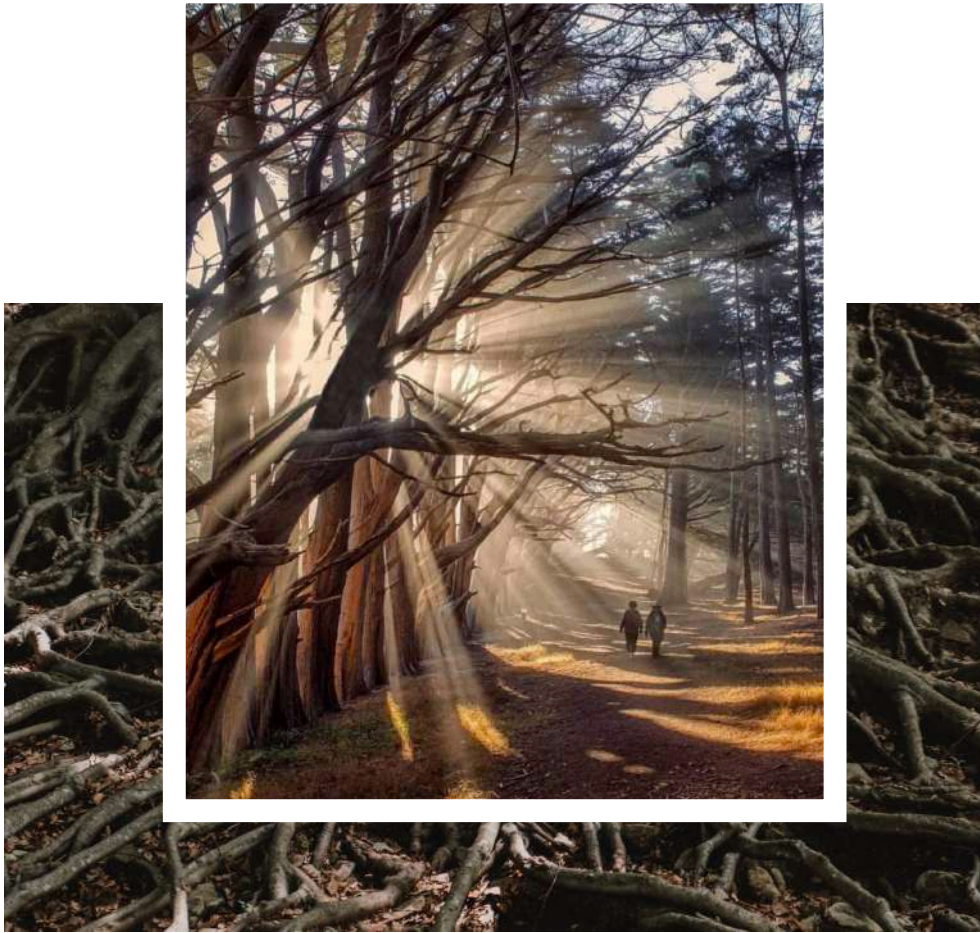
The polar regions may be beyond the reach for most of us but they are not beyond our influence. A glacier is a thick ice mass that develops on land from the gathering, compaction and recrystallization of snow and icebergs form when the ice calves from glaciers. The carpet reflects the geometrical patterns of the icebergs calving observed in nature with a warm glow of the sunset adding depth to the design. Inspired by the geometry of sea ice and its formations, creating a natural sculpture shaped by the elements.



## TUYET

Hand Tufted in 100% Viscose  
Size 6' x 8'9"





Carpet that mirrors the interconnectivity of roots and branches, creating a web-like pattern weaving a dialogue between the earthly and the hidden world. The carpet depicts the entanglement of life that breathes beneath our feet. Roots are suggestive of shapes of trees. The design reflects a densely rooted tree which is the most visible part in a forest. The unheimlich pattern of the unruly branches and gnarled trees was the inspiration behind.



## LENNOX

Hand Tufted in 100% Viscose  
Size 6'8" x 10'



Volcano is a flame of life. Like humans, fire is one of the livings, an organic life. It is conceived, needs sustenance and oxygen, it ages and succumbs. The physical attribute of a volcano and its formation is replicated in the design of the carpet. In abstraction, it is seen in a round shape that makes a powerful movement to ingrain the expectation of something past the structure. The flame once lit encourages everything inside its circle. The carpet symbolizes the sphere filled with flaming fire of a volcano.



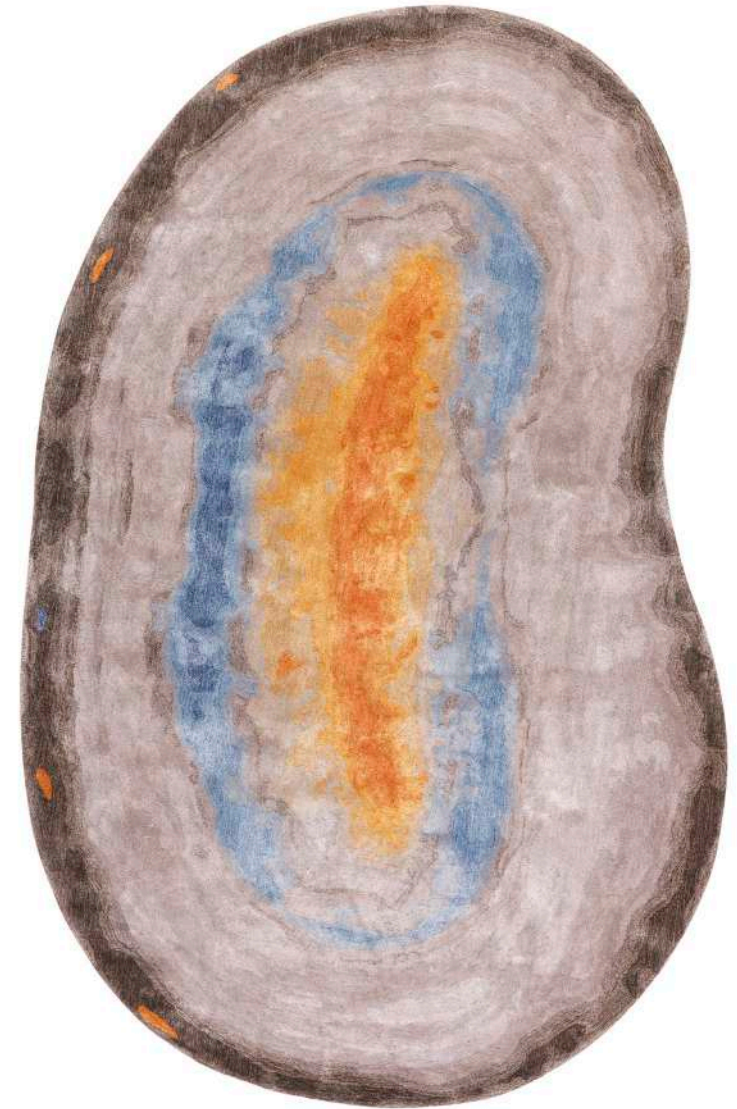
## KENNA

Hand Tufted in 100% Viscose  
Size 6' x 6'7"



A bubble is a dainty film of water drifting in the air. Its visual appearance is crystalline, displaying a pattern with wavering rainbow colors. Just characterized by a dubious layer, a bubble is fragile, it endures just a brief time before it explodes and vanishes. A bean-like shape is formed which floats freely in the environment.

Bubble consequently encapsulates the capability of catching the fantasy of the thought, complete and tangible. The natural formation of bubbles has been conceived by the designers in a form of a carpet.



## NESTA

Hand Tufted in 100% Viscose  
Size 6' x 9'



Combining the tangible and the intangible. Blurring the vision between real and surrealism. The intangible sun rays tearing apart the tangible rocks, forming an interesting composition which has awakened the creativity of the designers. The grouping together of the elements in this image has formed the design of the carpet.

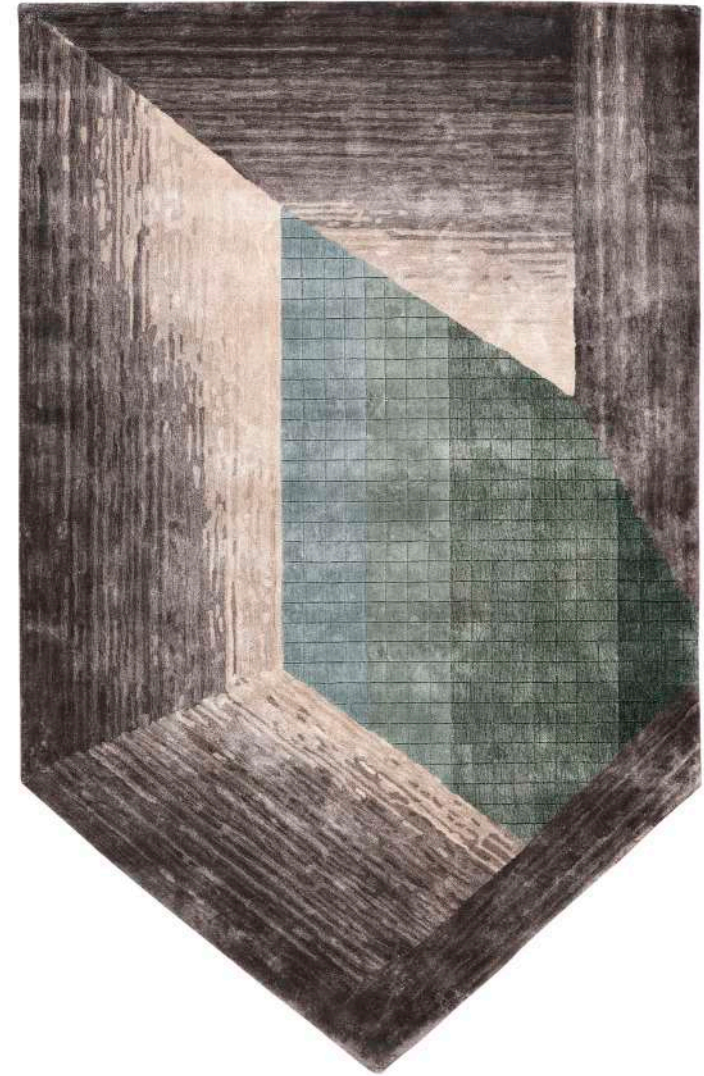


## SUNNEVA

Hand Tufted in Wool & Viscose  
Size 8' x 10'



Visual characteristics and forms of the rocks, the cave and the sky are depicted in the design of the carpet. The focus is on removing the clutter and distractions and highlighting the picturesque landscape, the cave and the sky are creating. The carpet radiates shapes and structures which are ethereal and boundless and express our relationship with the natural world that we live in.

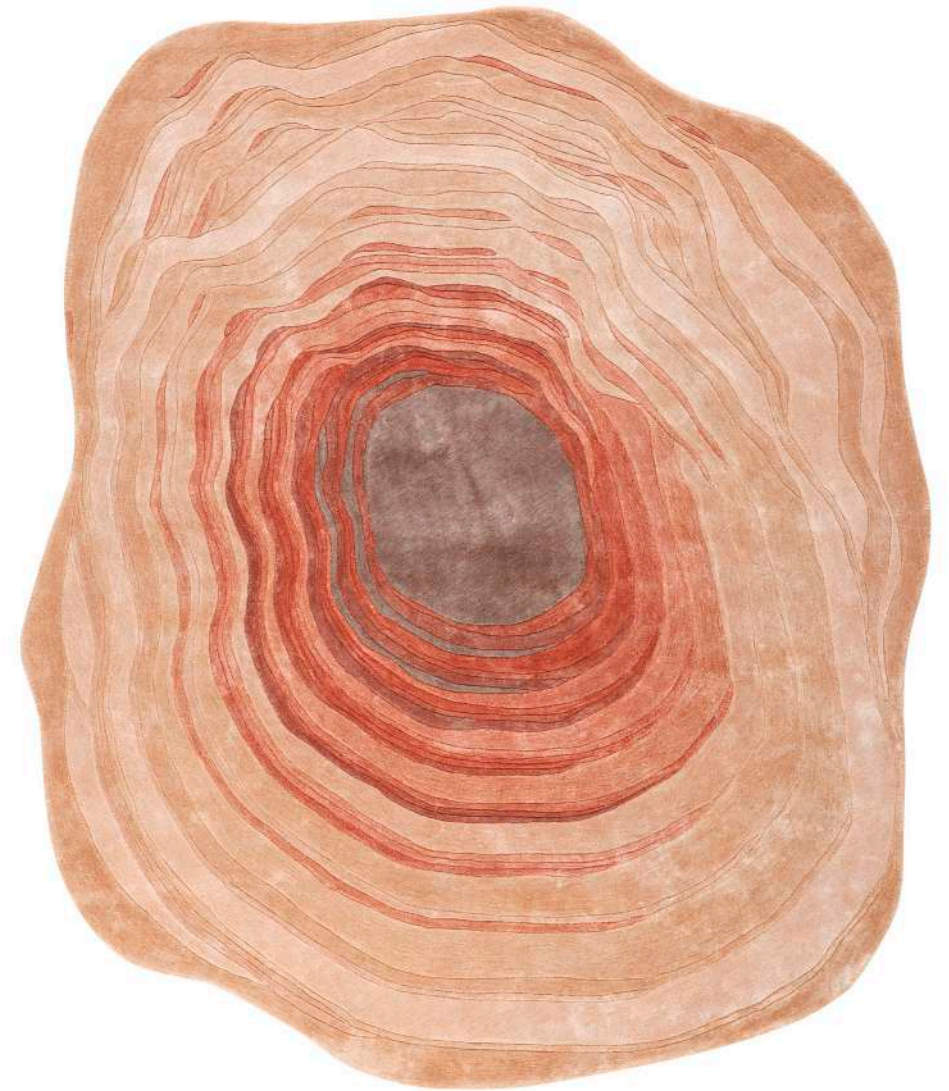


IZEL

Hand Tufted in 100% Viscose  
Size 5'4" x 8'6"



The spiral patterns of the fire waves on the sedimentary rocks are reflected perfectly in the design of the carpet. These formations are carved out from the shifting of the sand dunes. The wave is a staggering sandstone rock formation where the unique circular pattern is due to the erosion. This is an interesting sight to watch because of its enthralling view and unusual form.



## ARAM

Hand Tufted in 100% Viscose  
Size 7'1" x 8'



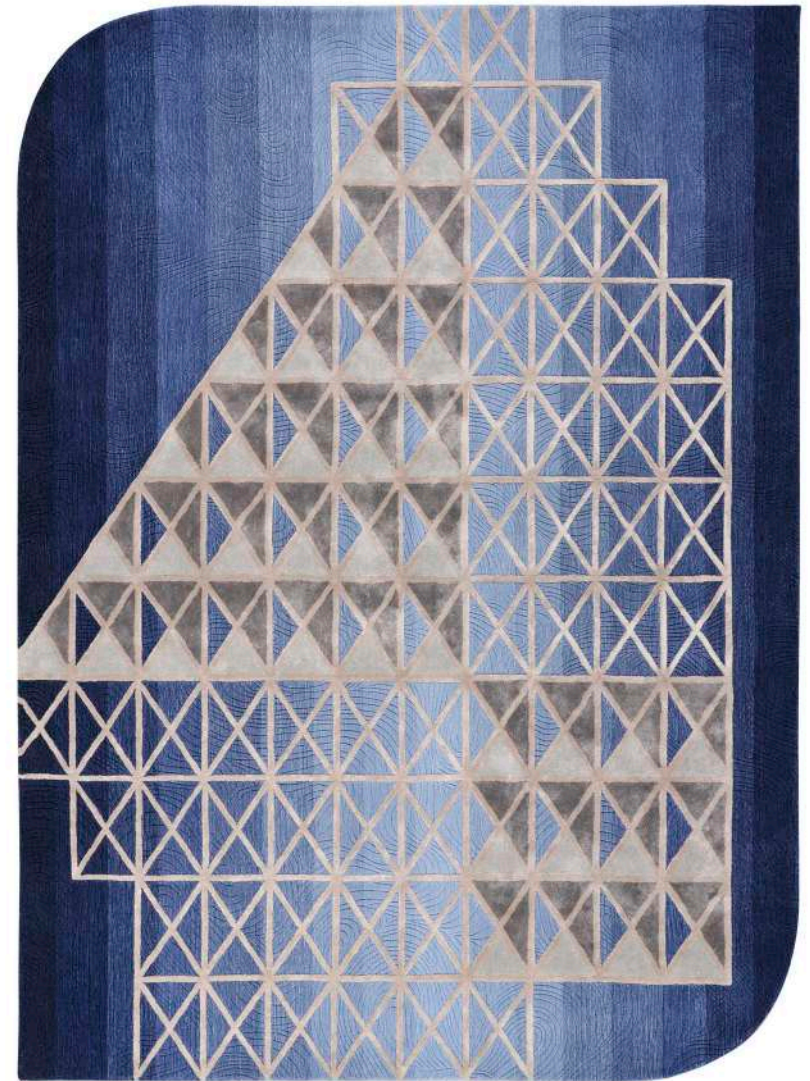
Mimicking Fingal's Cave in Scotland, a foreboding ocean cave on the uninhabited island of Staffa in Scotland framed totally from basalt and magma. The cavern was framed by the progression of magma upon basalt. As the magma cooled, it brought about a blocky tetragonal pattern framing the long hexagonal sections that make up the cavern. A literal reflection of nature's masterpiece with multiple basalt columns, each joint hexagonally. The structure of this unique cave is unlikely to be found anywhere else in the world and has fueled the designer's fascination with nature.



## MIERA

Hand Tufted in Wool & Viscose  
Size 6'9" x 7'4"

The frosted flowers formation on the lake are fascinating and unpredictable. These ice formations occur when humid air sits on the sea ice and freezes, resulting in beautiful flower-like formations. Each of the frosted flower forms intricate geometric cuts and patterns with the water flowing underneath. It is interesting to see endless patterns and textures created by the ice on lakes. These elements are incorporated in the composition of the carpet.



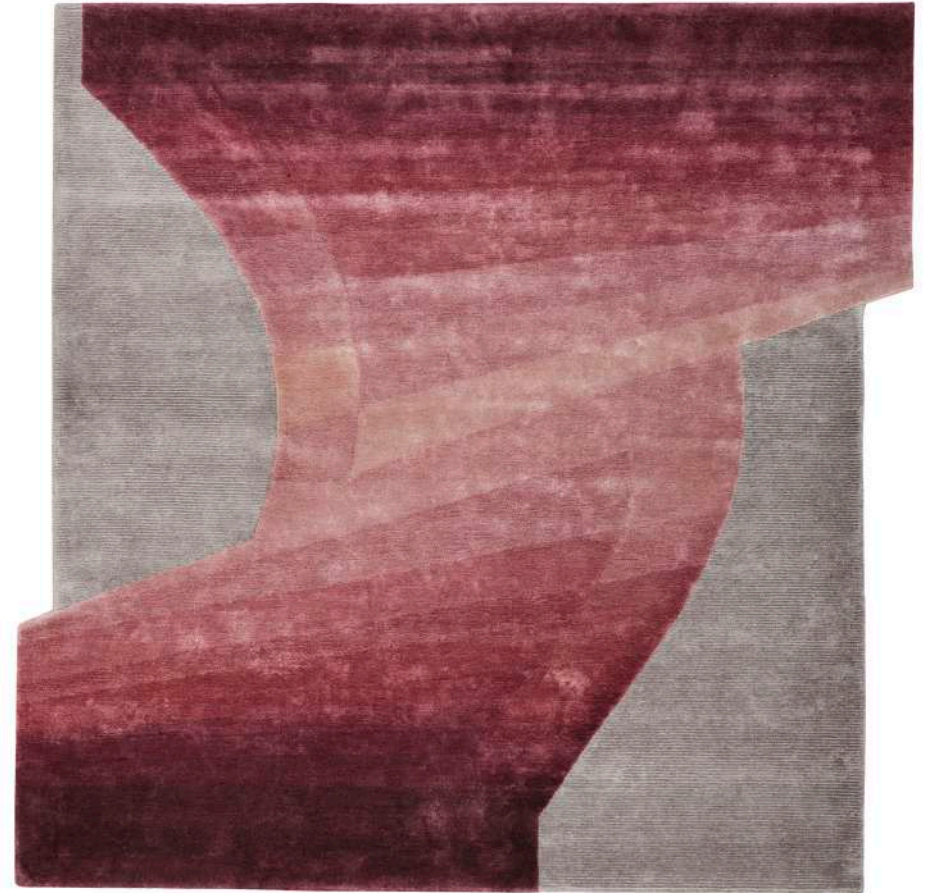
## FRORE

Hand Tufted in Wool & Viscose  
Size 7' x 9'7"





Aurora Borealis are created by the encounter between electrically charged particles from the sun as they enter Earth's air. People have different convictions with regards to its formation, some believe these are sparkles created by running Arctic fox while some say the aurora is the dance of animal and human spirits. The formations of these lights are dependent on the geomagnetic activity, from waves and bands to swirls and crowns. The most striking feature of this magical phenomenon is when it forms a fast-moving dancing chandelier in the sky which has inspired the design of the carpet.



## EMRYS

Hand Tufted in Wool & Viscose  
Size 8' x 8'

SERIE 2 | TRANSITIONAL  
SERIE 2 | TRANSITIONAL  
SERIE 2 | TRANSITIONAL  
**SERIE 2 | TRANSITIONAL**

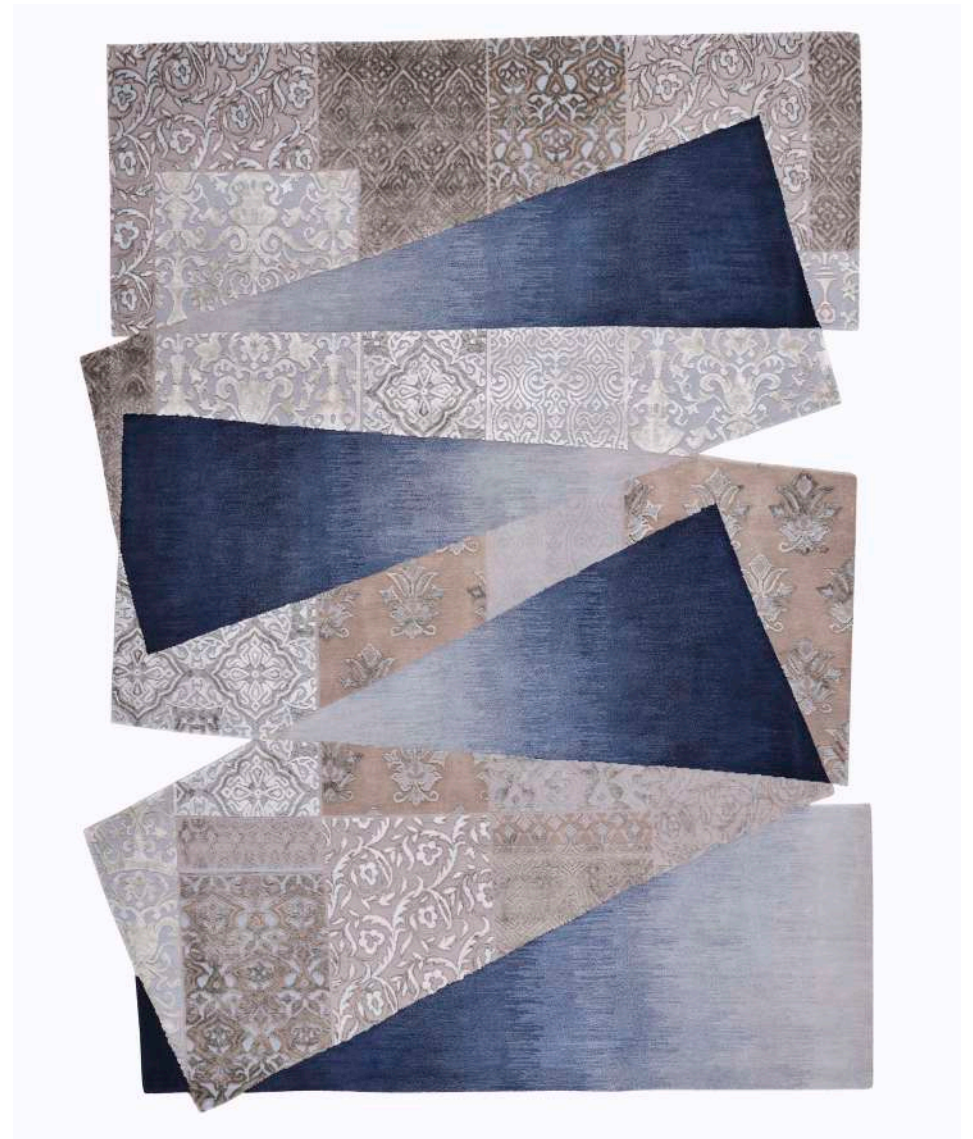
8 transitional carpets intricately weaving nature in their formation. Meticulously hand knotted in Wool and Viscose. Each composition bears irregular patterns mirroring the organic flow and form of nature with a traditional twist of Persian motifs. From deliberate circular shapes to rambling, whirling patterns in earthly hues, each design is loaded up with energy and life. Hands has always been encouraged to experiment with different inspirations and genres, effortlessly marrying nature and designs, setting the trend within the industry.

# RHYTHMIC

PATTERN

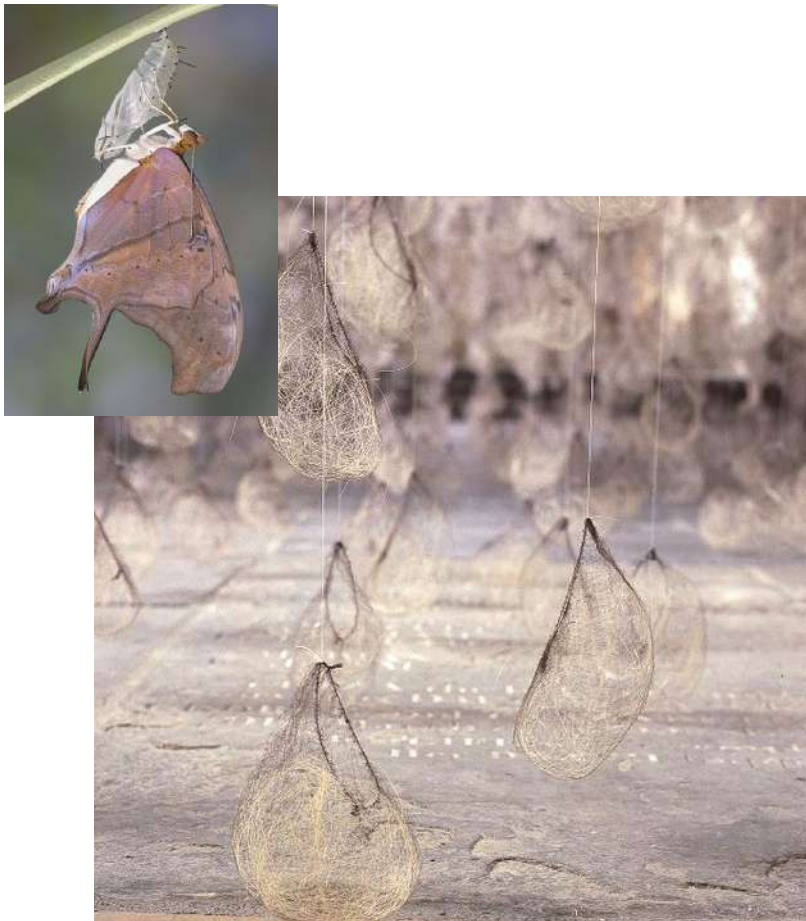


Inspired by the interesting pattern of the blue limestone river, Aguas Turquesas Millpu in Peru. This is nature and art in motion. The carpet maps the layers of water and land, the meeting and parting ways of the elements of earth. The carpet reveals an aerial view of the marvelous forms of the river, nature's simple rhythmic formation and pattern.



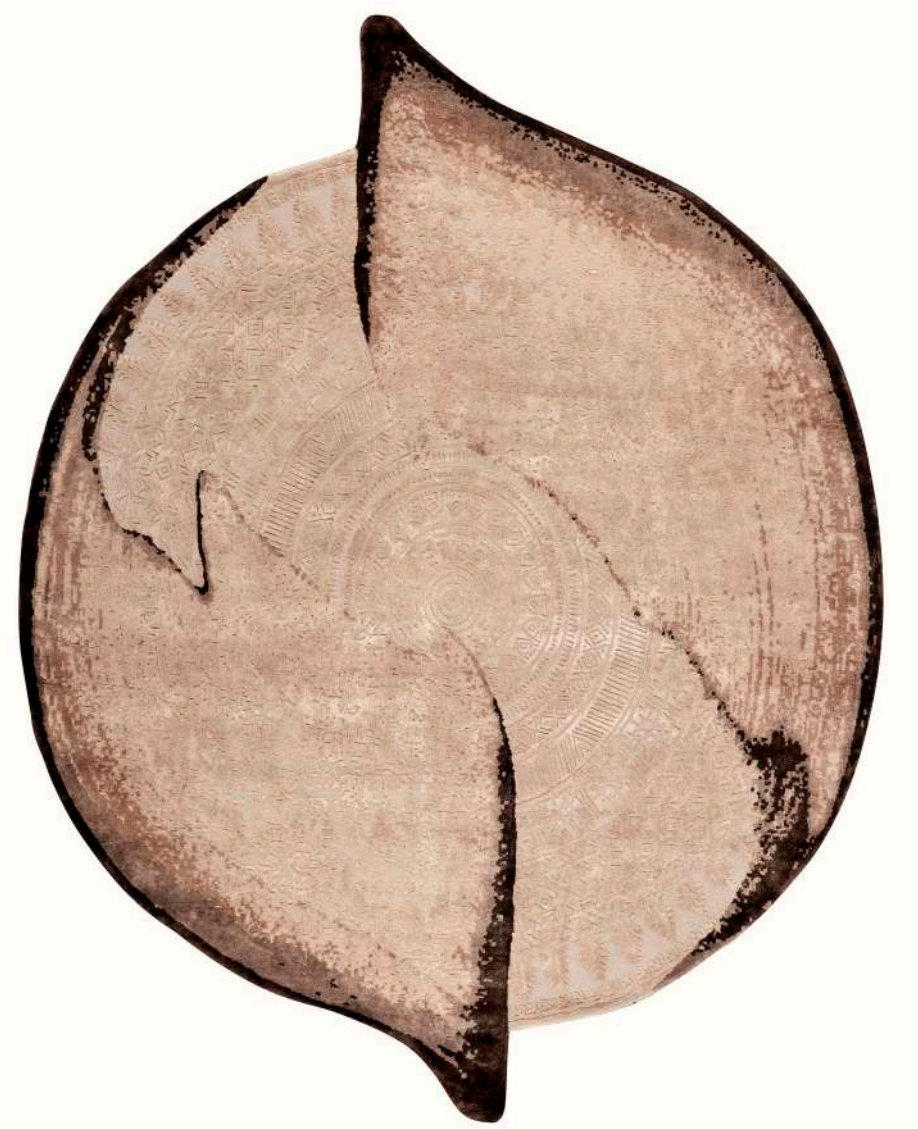
## IMRAK

Hand Knotted in Wool & Viscose  
Size 7'5" x 10'



The cocoon silhouette. Cocoons have always been valued for their appeal and magnificence, yet nobody can truly clarify why they are echoed so blatantly in the realm of craftsmanship and nature. Inspired by the intricate details, the shape, the pattern, the birth of a butterfly. A design which is reminiscent of its form. Cocoon confined by its wings, providing comfort to the body until it was the ideal opportunity for it to break free. Channeling the shape and form of a multifaceted cocoon to make a delineation of the process of a cocoon transforming into a butterfly.

*Shaped like a cocoon creating an ethereal gradient effect.*



## CHRYSALIS

Hand Knotted in Wool & Viscose  
Size 7'1" x 9'



Carpet in full bloom. To honor the mother nature, we have made a carpet bouquet. The flower patterns and its elements dominate the design through foliage and petals. Design that represents a future bountiful with hope, flagging that the time has come to accomplish, flourish and bloom. Flower buds and branches that arise and unfurl across each piece are meaningful of resurrection and revival, in anticipation of a beautiful tomorrow.



## ZINNIA

Hand Knotted in Wool & Viscose  
Size 6' x 8'



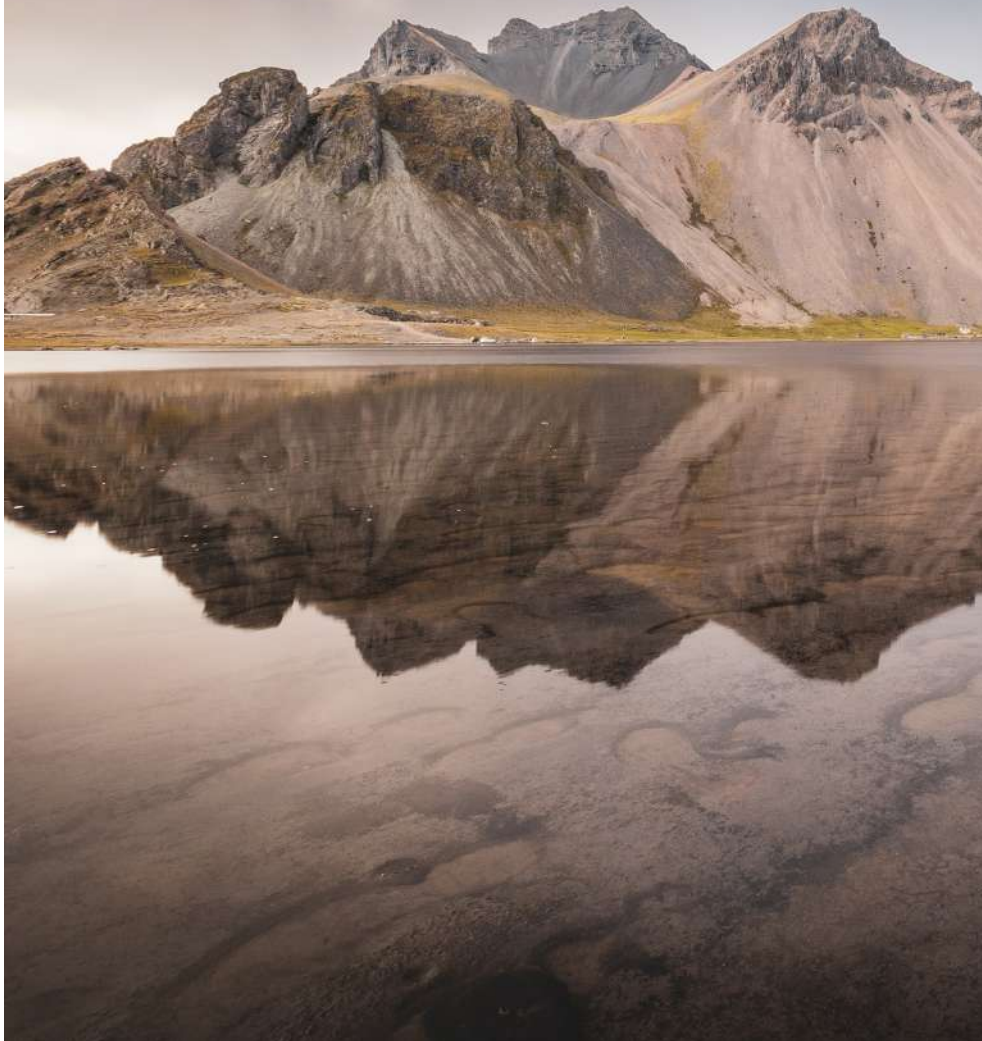
The astronomical accolades have inspired the design where the carpet captures the drifting asteroid in the night sky. It's a representation of a space odyssey. The designers went interstellar with a design that took explicit inspiration from outer space. It's a dreamy escape to the universe and what it holds.



ESHE

Hand Knotted in Wool & Viscose  
Size 6' x 9'

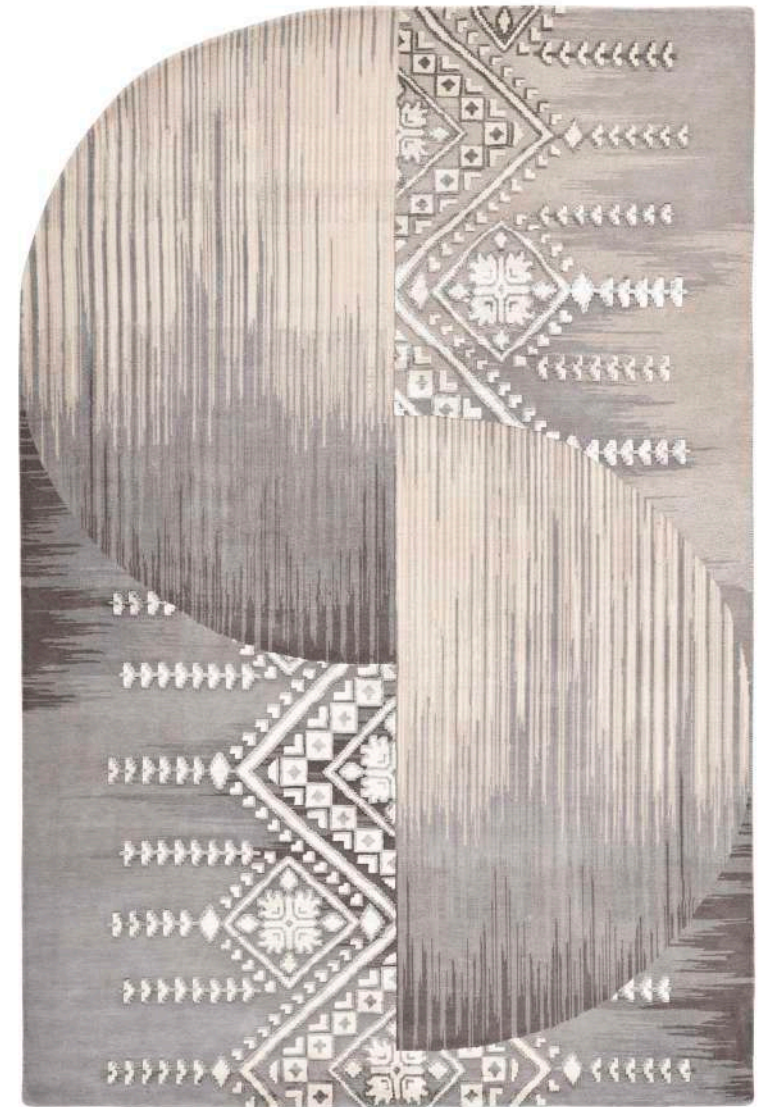
Shaping the panoramic view of a whimsical landscape. The carpet design is a sensitive interpretation of this beautiful sight of nature. Mountain-like structures, the sky and its shadowing effect on the lake, instilled in the pattern of the carpet. Mimicking harmony in nature. It's a sliver of escapism to the world beyond, giving a certain sense of calmness and serenity. A beautiful color palette, capturing the essence of the dawn. The life above the ground and its reflection underneath.



## ZIELLE

Hand Knotted in Wool & Viscose  
Size 7' x 10'

Celebrating the magnificence of the sea, a jellyfish. This underwater life form is the muse behind the carpet. These no brain, no bone and no blood creature depict fragility and movement. The bell-shaped hood of the jellyfish with wafted lines and suspended tentacles translates perfectly in the design of the carpet. Representation of the marine organism, manifested in ocean colors.

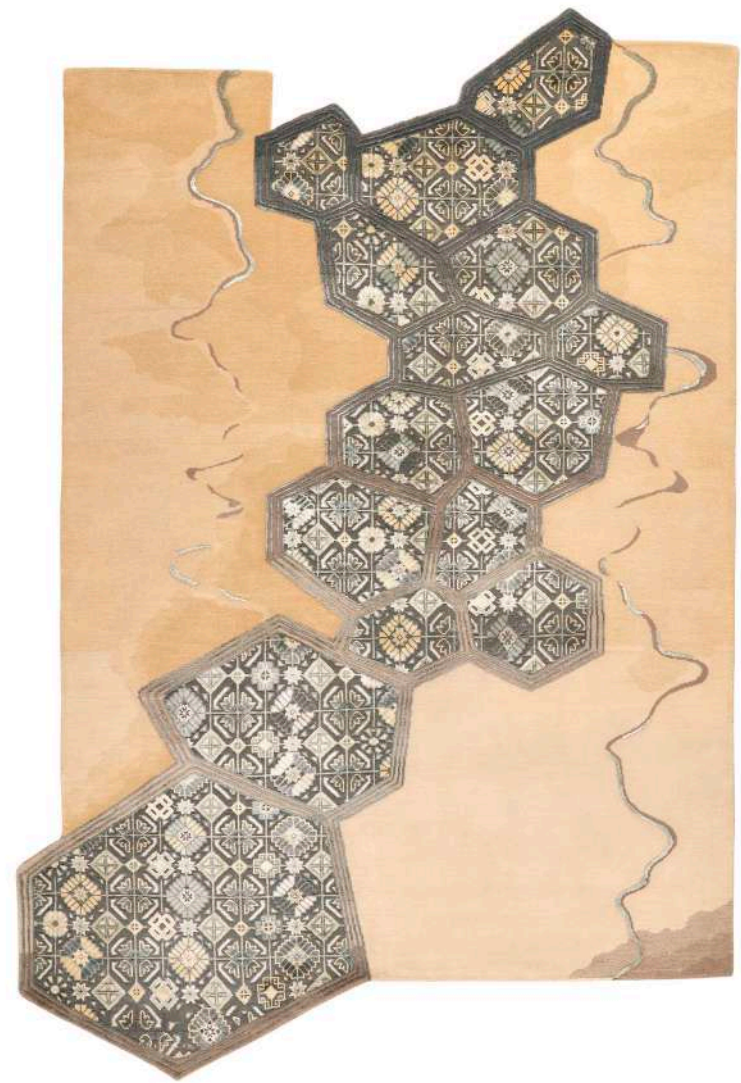


## KALLISTE

Hand Knotted in Wool & Viscose  
Size 6' x 9'2"



Tundra polygons are what they sound like - bits of ground that are formed like polygons. These polygons are shaped on account of the freeze-defrost cycle that happens in permafrost regions like the Arctic. These polygons are the key to the marshlands that make astounding bird settling regions, as they make little, shallow lakes encompassing dry land. The same frost crack patterned ground has been replicated in the design of the carpet with the form dramatically shaped.



## MIRARI

Hand Knotted in Wool & Viscose  
Size 6' x 9'2"



Designed after the dramatic terrain of the Grand Canyon, this carpet evokes nature's mystery found in the geological wonder. Canyons are found in diverse shapes and forms. Carved by the Colorado river, the Grand Canyon showcases layered rocks disentangling the area's geologic history. The maze-like pattern of the Grand Canyon has been imitated in the design and shape of the carpet. This mesmerizing piece of nature's architecture with rocky and steep walled valley, natural arches, sun-blazed rock formation tells a tale of time, like no other.



## GIZEM

Hand Knotted in Wool & Viscose  
Size 8'6" x 8'6"

# Hands<sup>®</sup>

**fine handmade carpets since 1881**

**Delhi** 372/74, Mehrauli Gurgaon Road, Sultanpur, New Delhi, India.  
Call +91 11 2680 6475/8 | [del@hands-carpets.com](mailto:del@hands-carpets.com) | [www.handscarpets.com](http://www.handscarpets.com)

**Mumbai** Unit No. 32R & 32H, Laxmi industrial Estate, Andheri (W), Mumbai India.  
Call +91 22 2632 0609 | [mumbai@hands-carpets.com](mailto:mumbai@hands-carpets.com) | [www.handscarpets.com](http://www.handscarpets.com)

**Hyderabad** 4F, 8-2-686/B/2/N, Rd Number 12, Banjara Hills, Hyderabad,  
Telangana - 500034 Call +91 78160 37635 | [hyd@hands-carpets.com](mailto:hyd@hands-carpets.com) |  
[www.handscarpets.com](http://www.handscarpets.com)

**Dubai** Hands Carpets FZ - LLC, Shop no.3, Ground Floor, Building 9,  
Dubai Design District, Dubai, UAE (P.O. Box 333015)  
Call +971 58 8250 464 / 574 | [info@handscarpets.ae](mailto:info@handscarpets.ae) | [www.handscarpets.ae](http://www.handscarpets.ae)

**Singapore** Hands Carpets Asia Pte Ltd. 39 Woodlands Close #03-59, Singapore  
737856 Call +65 67788789 | [info@handscarpets.asia](mailto:info@handscarpets.asia) | [www.handscarpets.asia](http://www.handscarpets.asia)



Connect with us

